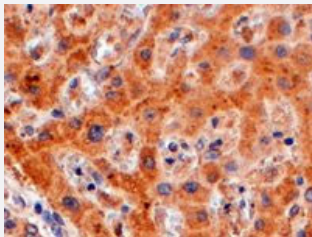


WDFY1 polyclonal antibody

Catalog # PAB6612 Size 100 ug

Applications



Immunohistochemistry (Formalin/PFA-fixed paraffin-embedded sections)

WDFY1 polyclonal antibody (Cat # PAB6612) (4 ug/mL) staining of paraffin embedded human liver. Steamed antigen retrieval with Tris/EDTA buffer pH 9, HRP-staining.

Specification

Product Description	Goat polyclonal antibody raised against synthetic peptide of WDFY1.
Immunogen	A synthetic peptide corresponding to C-terminus of human WDFY1.
Sequence	VVGCSLATGFSPH
Host	Goat
Theoretical MW (kDa)	46.3
Reactivity	Human
Specificity	This antibody is expected to recognize both reported isoforms (as represented by NP_065881 and NP_848127)
Form	Liquid
Purification	Antigen affinity purification
Concentration	0.5 mg/mL

Recommend Usage	ELISA (1:32000) Immunohistochemistry (Formalin/PFA-fixed paraffin-embedded sections) (4-6 ug/mL) The optimal working dilution should be determined by the end user.
Storage Buffer	In Tris saline, pH 7.3 (0.5% BSA, 0.02% sodium azide)
Storage Instruction	Store at -20°C. Aliquot to avoid repeated freezing and thawing.
Note	This product contains sodium azide: a POISONOUS AND HAZARDOUS SUBSTANCE which should be handled by trained staff only.

Applications

- Immunohistochemistry (Formalin/PFA-fixed paraffin-embedded sections)

WDFY1 polyclonal antibody (Cat # PAB6612) (4 ug/mL) staining of paraffin embedded human liver. Steamed antigen retrieval with Tris/EDTA buffer pH 9, HRP-staining.

- Enzyme-linked Immunoabsorbent Assay

Gene Info — WDFY1

Entrez GeneID	57590
Protein Accession#	NP_065881;NP_848127
Gene Name	WDFY1
Gene Alias	FENS-1, WDF1, ZFYVE17
Gene Description	WD repeat and FYVE domain containing 1
Gene Ontology	Hyperlink
Gene Summary	The FYVE domain mediates the recruitment of proteins involved in membrane trafficking and cell signaling to phosphatidylinositol 3-phosphate (PtdIns(3)P)-containing membranes. This gene encodes a protein which contains a single FYVE domain and multiple WD40 repeats. This protein is localized to endosomes. [provided by RefSeq]
Other Designations	WD40 and FYVE domain containing 1 phosphoinositide-binding protein SR1

Publication Reference

- [FENS-1 and DFCP1 are FYVE domain-containing proteins with distinct functions in the endosomal and Golgi compartments.](#)

Ridley SH, Ktistakis N, Davidson K, Anderson KE, Manifava M, Ellson CD, Lipp P, Bootman M, Coadwell J, Nazarian A, Erdjument-Bromage H, Tempst P, Cooper MA, Thuring JW, Lim ZY, Holmes AB, Stephens LR, Hawkins PT.

Journal of Cell Science 2001 Nov; 114(Pt 22):3991.