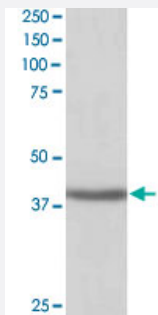


# SIRT4 polyclonal antibody

Catalog # PAB6590

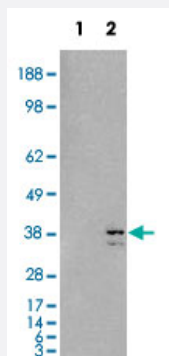
Size 100 ug

## Applications



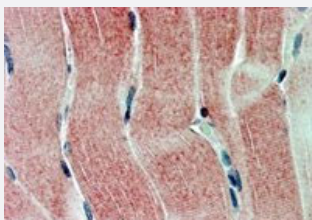
### Western Blot (Tissue lysate)

SIRT4 polyclonal antibody (Cat # PAB6590) staining (1 ug/mL) of human kidney lysate (RIPA buffer, 35 ug total protein per lane). Primary incubated for 1 hour. Detected by western blot using chemiluminescence.



### Western Blot (Transfected lysate)

HEK293 overexpressing SIRT4 and probed with SIRT4 polyclonal antibody (Cat # PAB6590) (mock transfection in first lane), tested by Origene.



### Immunohistochemistry (Formalin/PFA-fixed paraffin-embedded sections)

SIRT4 polyclonal antibody (Cat # PAB6590) (2.5 ug/mL) staining of paraffin embedded human skeletal muscle. Steamed antigen retrieval with citrate buffer pH 6, AP-staining.

## Specification

### Product Description

Goat polyclonal antibody raised against synthetic peptide of SIRT4.

<b>Immunogen</b>	A synthetic peptide corresponding to C-terminus of human SIRT4.
<b>Sequence</b>	SRGELLPLIDPC
<b>Host</b>	Goat
<b>Theoretical MW (kDa)</b>	35.2
<b>Reactivity</b>	Human, Rat
<b>Form</b>	Liquid
<b>Purification</b>	Antigen affinity purification
<b>Concentration</b>	0.5 mg/mL
<b>Recommend Usage</b>	ELISA (1:32000) Western blot (1-3 ug/mL) Immunohistochemistry (Formalin/PFA-fixed paraffin-embedded sections) (2-3 ug/mL) The optimal working dilution should be determined by the end user.
<b>Storage Buffer</b>	In Tris saline, pH 7.3 (0.5% BSA, 0.02% sodium azide)
<b>Storage Instruction</b>	Store at -20°C. Aliquot to avoid repeated freezing and thawing.
<b>Note</b>	This product contains sodium azide: a POISONOUS AND HAZARDOUS SUBSTANCE which should be handled by trained staff only.

## Applications

- Western Blot (Tissue lysate)

SIRT4 polyclonal antibody (Cat # PAB6590) staining (1 ug/mL) of human kidney lysate (RIPA buffer, 35 ug total protein per lane). Primary incubated for 1 hour. Detected by western blot using chemiluminescence.

- Western Blot (Transfected lysate)

HEK293 overexpressing SIRT4 and probed with SIRT4 polyclonal antibody (Cat # PAB6590) (mock transfection in first lane), tested by Origene.

- Immunohistochemistry (Formalin/PFA-fixed paraffin-embedded sections)

SIRT4 polyclonal antibody (Cat # PAB6590) (2.5 ug/mL) staining of paraffin embedded human skeletal muscle. Steamed antigen retrieval with citrate buffer pH 6, AP-staining.

- Enzyme-linked Immunoabsorbent Assay

## Gene Info — SIRT4

Entrez GeneID [23409](#)

Protein Accession# [NP\\_036372.1](#)

Gene Name SIRT4

Gene Alias MGC130046, MGC130047, MGC57437, SIR2L4

Gene Description sirtuin (silent mating type information regulation 2 homolog) 4 (S. cerevisiae)

Omim ID [604482](#)

Gene Ontology [Hyperlink](#)

**Gene Summary** This gene encodes a member of the sirtuin family of proteins, homologs to the yeast Sir2 protein. Members of the sirtuin family are characterized by a sirtuin core domain and grouped into four classes. The functions of human sirtuins have not yet been determined; however, yeast sirtuin proteins are known to regulate epigenetic gene silencing and suppress recombination of rDNA. Studies suggest that the human sirtuins may function as intracellular regulatory proteins with mono-ADP-ribose transferase activity. The protein encoded by this gene is included in class IV of the sirtuin family. [provided by RefSeq]

**Other Designations** sir2-like 4|sirtuin 4|sirtuin type 4

## Publication Reference

- [Characterization of five human cDNAs with homology to the yeast SIR2 gene: Sir2-like proteins \(sirtuins\) metabolize NAD and may have protein ADP-ribosyltransferase activity.](#)

Frye RA.

Biochemical and Biophysical Research Communications 1999 Jun; 260(1):273.

## Disease

- [Diabetes Mellitus](#)
- [Genetic Predisposition to Disease](#)