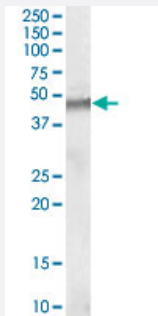


# STK35 polyclonal antibody

Catalog # PAB6579

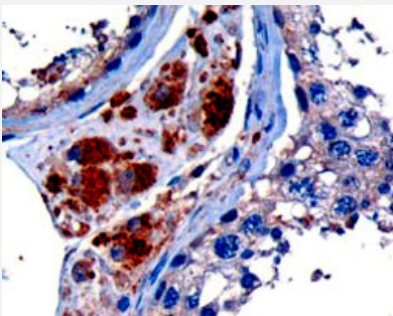
Size 100 ug

## Applications



### Western Blot (Tissue lysate)

STK35 polyclonal antibody (Cat # PAB6579) (1 ug/mL) staining of human testis lysate (35 ug protein in RIPA buffer). Primary incubation was 1 hour. Detected by chemiluminescence.



### Immunohistochemistry (Formalin/PFA-fixed paraffin-embedded sections)

STK35 polyclonal antibody (Cat # PAB6579) (10 ug/mL) staining of paraffin embedded human testis. Microwaved antigen retrieval with Tris/EDTA buffer pH9, HRP-staining.

## Specification

Product Description	Goat polyclonal antibody raised against synthetic peptide of STK35.
Immunogen	A synthetic peptide corresponding to C-terminus of human STK35.
Sequence	ELETRMDQVTCAA
Host	Goat
Theoretical MW (kDa)	44.6
Reactivity	Human
Form	Liquid

Purification	Antigen affinity purification
Concentration	0.5 mg/mL
Recommend Usage	ELISA (1:16000) Western Blot (1-3 ug/mL) Immunohistochemistry (Formalin/PFA-fixed paraffin-embedded sections) (10 ug/mL) The optimal working dilution should be determined by the end user.
Storage Buffer	In Tris saline, pH 7.3 (0.5% BSA, 0.02% sodium azide)
Storage Instruction	Store at -20°C. Aliquot to avoid repeated freezing and thawing.
Note	This product contains sodium azide: a POISONOUS AND HAZARDOUS SUBSTANCE which should be handled by trained staff only.

## Applications

- Western Blot (Tissue lysate)

STK35 polyclonal antibody (Cat # PAB6579) (1 ug/mL) staining of human testis lysate (35 ug protein in RIPA buffer). Primary incubation was 1 hour. Detected by chemiluminescence.

- Immunohistochemistry (Formalin/PFA-fixed paraffin-embedded sections)

STK35 polyclonal antibody (Cat # PAB6579) (10 ug/mL) staining of paraffin embedded human testis. Microwaved antigen retrieval with Tris/EDTA buffer pH9, HRP-staining.

- Enzyme-linked Immunoabsorbent Assay

## Gene Info — STK35

Entrez GeneID	<a href="#">140901</a>
Protein Accession#	<a href="#">NP_543026.2</a>
Gene Name	STK35
Gene Alias	CLIK1
Gene Description	serine/threonine kinase 35
Omim ID	<a href="#">609370</a>
Gene Ontology	<a href="#">Hyperlink</a>

**Gene Summary**

The protein encoded by this gene is a kinase that is predominantly found in the nucleus. However, it can interact with PDLIM1/CLP-36 in the cytoplasm and localize to actin stress fibers. The encoded protein may be a regulator of actin stress fibers in nonmuscle cells. [provided by RefSeq]

**Other Designations**

CLP-36 interacting kinase|OTTHUMP00000030006

## Publication Reference

- [Identifying and characterizing a novel protein kinase STK35L1 and deciphering its orthologs and close-homologs in vertebrates.](#)

Goyal P, Behring A, Kumar A, Siess W.

PLoS One 2009 Sep; 4(9):e6981.