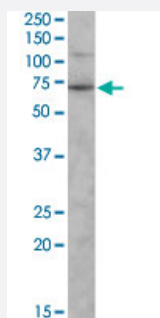


SNTG2 polyclonal antibody

Catalog # PAB6578

Size 100 ug

Applications



Western Blot (Tissue lysate)

SNTG2 polyclonal antibody (Cat # PAB6578, 0.3 ug/mL) staining of human duodenum lysate (35 ug protein in RIPA buffer) . Primary incubation was 1 hour. Detected by chemiluminescence.

Specification

Product Description Goat polyclonal antibody raised against synthetic peptide of SNTG2.

Immunogen A synthetic peptide corresponding to human SNTG2.

Sequence C-DSQSLARKYMYSS

Host Goat

Theoretical MW (kDa) 60.2

Reactivity Human

Form Liquid

Purification Antigen affinity purification

Concentration 0.5 mg/mL

Quality Control Testing Antibody Reactive Against Synthetic Peptide.

Recommend Usage
 ELISA (1:8000)
 Western Blot (1 ug/mL)
 The optimal working dilution should be determined by the end user.

Storage Buffer	In Tris saline, pH 7.3 (0.5% BSA, 0.02% sodium azide)
Storage Instruction	Store at -20°C. Aliquot to avoid repeated freezing and thawing.
Note	This product contains sodium azide: a POISONOUS AND HAZARDOUS SUBSTANCE which should be handled by trained staff only.

Applications

- Western Blot (Tissue lysate)

SNTG2 polyclonal antibody (Cat # PAB6578, 0.3 ug/mL) staining of human duodenum lysate (35 ug protein in RIPA buffer) . Primary incubation was 1 hour. Detected by chemiluminescence.

- Enzyme-linked Immunoabsorbent Assay

Gene Info — SNTG2

Entrez GeneID	54221
Protein Accession#	NP_061841
Gene Name	SNTG2
Gene Alias	G2SYN, MGC133174, SYN5
Gene Description	syntrophin, gamma 2
Omim ID	608715
Gene Ontology	Hyperlink
Gene Summary	This gene encodes a protein belonging to the syntrophin family. Syntrophins are cytoplasmic peripheral membrane proteins that bind to components of mechanosensitive sodium channels and the extreme carboxy-terminal domain of dystrophin and dystrophin-related proteins. The PDZ domain of this protein product interacts with a protein component of a mechanosensitive sodium channel that affects channel gating. Absence or reduction of this protein product has been associated with Duchenne muscular dystrophy. There is evidence of alternative splicing yet the full-length nature of these variants has not been described. [provided by RefSeq]
Other Designations	gamma2-syntrophin syntrophin 5

Publication Reference

- [Gamma1- and gamma2-syntrophins, two novel dystrophin-binding proteins localized in neuronal cells.](#)

Piluso G, Mirabella M, Ricci E, Belsito A, Abbondanza C, Servidei S, Puca AA, Tonalì P, Puca GA, Nigro V.

The Journal of Biological Chemistry 2000 May; 275(21):15851.

Application: IF, Human, Muscle