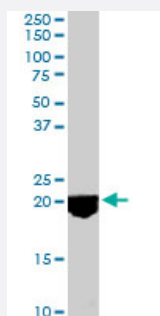


# VPS29 polyclonal antibody

Catalog # PAB6574

Size 100 ug

## Applications



### Western Blot (Tissue lysate)

VPS29 polyclonal antibody (Cat # PAB6574) staining (0.1 ug/mL) of human spleen lysate (RIPA buffer, 35 ug total protein per lane). Primary incubated for 1 hour. Detected by western blot using chemiluminescence.

## Specification

<b>Product Description</b>	Goat polyclonal antibody raised against synthetic peptide of VPS29.
<b>Immunogen</b>	A synthetic peptide corresponding to human VPS29.
<b>Sequence</b>	C-DDVKVERIEYKKP
<b>Host</b>	Goat
<b>Theoretical MW (kDa)</b>	20.5, 20.9
<b>Reactivity</b>	Human
<b>Specificity</b>	This antibody is expected to recognize both human isoforms (represented by NP_057310.1; NP_476528.1).
<b>Form</b>	Liquid
<b>Purification</b>	Antigen affinity purification
<b>Concentration</b>	0.5 mg/mL
<b>Quality Control Testing</b>	Antibody Reactive Against Synthetic Peptide.

Recommend Usage	ELISA (1:16000) Western Blot (0.1-0.3 ug/mL) The optimal working dilution should be determined by the end user.
Storage Buffer	In Tris saline, pH 7.3 (0.5% BSA, 0.02% sodium azide)
Storage Instruction	Store at -20°C. Aliquot to avoid repeated freezing and thawing.
Note	This product contains sodium azide: a POISONOUS AND HAZARDOUS SUBSTANCE which should be handled by trained staff only.

## Applications

- Western Blot (Tissue lysate)

VPS29 polyclonal antibody (Cat # PAB6574) staining (0.1 ug/mL) of human spleen lysate (RIPA buffer, 35 ug total protein per lane). Primary incubated for 1 hour. Detected by western blot using chemiluminescence.

- Enzyme-linked Immunoabsorbent Assay

## Gene Info — VPS29

Entrez GeneID	<a href="#">51699</a>
Protein Accession#	<a href="#">NP_057310.1;NP_476528.1</a>
Gene Name	VPS29
Gene Alias	DC15, DC7, DKFZp564F0223, FLJ20492, PEP11
Gene Description	vacuolar protein sorting 29 homolog (S. cerevisiae)
Omim ID	<a href="#">606932</a>
Gene Ontology	<a href="#">Hyperlink</a>
Gene Summary	This gene belongs to a group of vacuolar protein sorting (VPS) genes that, when functionally impaired, disrupt the efficient delivery of vacuolar hydrolases. The protein encoded by this gene is a component of a large multimeric complex, termed the retromer complex, which is involved in retrograde transport of proteins from endosomes to the trans-Golgi network. This VPS protein may be involved in the formation of the inner shell of the retromer coat for retrograde vesicles leaving the prevacuolar compartment. Alternative splice variants encoding different isoforms, and usage of multiple polyadenylation sites have been found for this gene. [provided by RefSeq]
Other Designations	retromer protein vacuolar protein sorting 29 vacuolar sorting protein VPS29/PEP11 x 007 protein

## Publication Reference

- [Molecular Basis of Insulin-Responsive GLUT4 Trafficking Systems Revealed by Single Molecule Imaging.](#)

Hatakeyama H, Kanzaki M.

Traffic 2011 Dec; 12(12):1805.

Application: WB-Tr, Mouse, 3T3L1 Fibroblasts