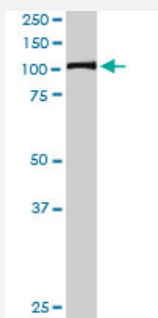


# XPO7 polyclonal antibody

Catalog # PAB6565      Size 100 ug

## Applications



### Western Blot (Cell lysate)

XPO7 polyclonal antibody (Cat # PAB6565) staining (0.5 ug/mL) of HeLa lysate (RIPA buffer, 35 ug total protein per lane). Primary incubated for 1 hour. Detected by western blot using chemiluminescence.

## Specification

<b>Product Description</b>	Goat polyclonal antibody raised against synthetic peptide of XPO7.
<b>Immunogen</b>	A synthetic peptide corresponding to human XPO7.
<b>Sequence</b>	C-NSTYGVNSNDMMS
<b>Host</b>	Goat
<b>Theoretical MW (kDa)</b>	125, 124
<b>Reactivity</b>	Human
<b>Form</b>	Liquid
<b>Purification</b>	Antigen affinity purification
<b>Concentration</b>	0.5 mg/mL
<b>Quality Control Testing</b>	Antibody Reactive Against Synthetic Peptide.
<b>Recommend Usage</b>	ELISA (1:32000) Western Blot (0.5-1 ug/mL) The optimal working dilution should be determined by the end user.

Storage Buffer	In Tris saline, pH 7.3 (0.5% BSA, 0.02% sodium azide)
Storage Instruction	Store at -20°C. Aliquot to avoid repeated freezing and thawing.
Note	This product contains sodium azide: a POISONOUS AND HAZARDOUS SUBSTANCE which should be handled by trained staff only.

## Applications

- Western Blot (Cell lysate)

XPO7 polyclonal antibody (Cat # PAB6565) staining (0.5 ug/mL) of HeLa lysate (RIPA buffer, 35 ug total protein per lane). Primary incubated for 1 hour. Detected by western blot using chemiluminescence.

- Enzyme-linked Immunoabsorbent Assay

## Gene Info — XPO7

Entrez GeneID	<a href="#">23039</a>
Protein Accession#	<a href="#">NP_055839</a>
Gene Name	XPO7
Gene Alias	KIAA0745, RANBP16
Gene Description	exportin 7
Omim ID	<a href="#">606140</a>
Gene Ontology	<a href="#">Hyperlink</a>
Gene Summary	The transport of protein and large RNAs through the nuclear pore complexes (NPC) is an energy-dependent and regulated process. The import of proteins with a nuclear localization signal (NLS) is accomplished by recognition of one or more clusters of basic amino acids by the importin-alpha/beta complex; see MIM 600685 and MIM 602738. The small GTPase RAN (MIM 601179) plays a key role in NLS-dependent protein import. RAN-binding protein-16 is a member of the importin-beta superfamily of nuclear transport receptors.[supplied by OMIM]
Other Designations	RAN binding protein 16

## Publication Reference

- [Identification of two novel RanGTP-binding proteins belonging to the importin beta superfamily.](#)

Kutay U, Hartmann E, Treichel N, Calado A, Carmo-Fonseca M, Prehn S, Kraft R, Gorlich D, Bischoff FR.

The Journal of Biological Chemistry 2000 Dec; 275(51):40163.

Application: WB-Ce, Human, HeLa cells