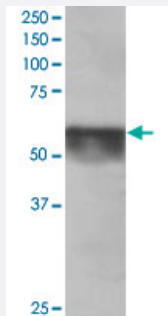


# KPNA4 polyclonal antibody

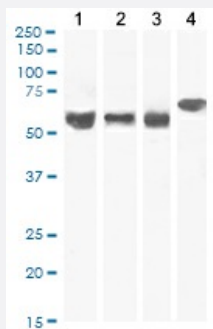
Catalog # PAB6561      Size 100 ug

## Applications



### Western Blot (Tissue lysate)

KPNA4 polyclonal antibody (Cat # PAB6561) staining (0.5 ug/mL) of human testis lysate (RIPA buffer, 35 ug total protein per lane). Primary incubated for 1 hour. Detected by western blot using chemiluminescence.



### Western Blot (Tissue lysate)

KPNA4 polyclonal antibody (Cat # PAB6561) staining (0.1 ug/mL) of Human Ovary (1), Mouse Testes (2), (0.3 ug/mL) Mouse Ovary (3) and (0.03 ug/mL) Rat Testes (4) lysate (RIPA buffer, 35 ug total protein per lane). Detected by chemiluminescence.

## Specification

Product Description	Goat polyclonal antibody raised against synthetic peptide of KPNA4.
Immunogen	A synthetic peptide corresponding to C-terminus of human KPNA4.
Sequence	C-NSSANVPTEGFQF
Host	Goat
Theoretical MW (kDa)	58
Reactivity	Human, Mouse
Form	Liquid

<b>Purification</b>	Antigen affinity purification
<b>Concentration</b>	0.5 mg/mL
<b>Recommend Usage</b>	ELISA (1:128000) Western Blot (0.03-0.3 ug/mL) The optimal working dilution should be determined by the end user.
<b>Storage Buffer</b>	In Tris saline, pH 7.3 (0.5% BSA, 0.02% sodium azide)
<b>Storage Instruction</b>	Store at -20°C. Aliquot to avoid repeated freezing and thawing.
<b>Note</b>	This product contains sodium azide: a POISONOUS AND HAZARDOUS SUBSTANCE which should be handled by trained staff only.

## Applications

- Western Blot (Tissue lysate)

KPNA4 polyclonal antibody (Cat # PAB6561) staining (0.5 ug/mL) of human testis lysate (RIPA buffer, 35 ug total protein per lane). Primary incubated for 1 hour. Detected by western blot using chemiluminescence.

- Western Blot (Tissue lysate)

KPNA4 polyclonal antibody (Cat # PAB6561) staining (0.1 ug/mL) of Human Ovary (1), Mouse Testes (2), (0.3 ug/mL) Mouse Ovary (3) and (0.03 ug/mL) Rat Testes (4) lysate (RIPA buffer, 35 ug total protein per lane). Detected by chemiluminescence.

- Enzyme-linked Immunoabsorbent Assay

## Gene Info — KPNA4

<b>Entrez GeneID</b>	<a href="#">3840</a>
<b>Protein Accession#</b>	<a href="#">NP_002259.1</a>
<b>Gene Name</b>	KPNA4
<b>Gene Alias</b>	IPOA3, MGC12217, MGC26703, QIP1, SRP3
<b>Gene Description</b>	karyopherin alpha 4 (importin alpha 3)
<b>Omim ID</b>	<a href="#">602970</a>
<b>Gene Ontology</b>	<a href="#">Hyperlink</a>

**Gene Summary**

The nuclear import of karyophilic proteins is directed by short amino acid sequences termed nuclear localization signals (NLSs). Karyopherins, or importins, are cytoplasmic proteins that recognize NLSs and dock NLS-containing proteins to the nuclear pore complex. The protein encoded by this gene shares the sequence similarity with *Xenopus* importin- $\alpha$  and *Saccharomyces cerevisiae* Srp1. This protein is found to interact with the NLSs of DNA helicase Q1 and SV40 T antigen. [provided by RefSeq]

**Other Designations**

importin alpha 3|importin-alpha-Q1|karyopherin alpha 4

**Publication Reference**

- [Cutting Edge: Tubulin {alpha} Functions as an Adaptor in NFAT-Importin {beta} Interaction.](#)

Ishiguro K, Ando T, Maeda O, Watanabe O, Goto H.

The Journal of Immunology 2011 Mar; 186(5):2710.

Application: WB, Human, Jurkat cells

- [Cloning of a cDNA encoding a novel importin-alpha homologue, Qip1: discrimination of Qip1 and Rch1 from hSrp1 by their ability to interact with DNA helicase Q1/RecQL.](#)

Seki T, Tada S, Katada T, Enomoto T.

Biochemical and Biophysical Research Communications 1997 May; 234(1):48.