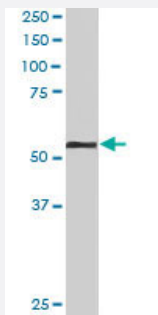


KPNA2 polyclonal antibody

Catalog # PAB6558

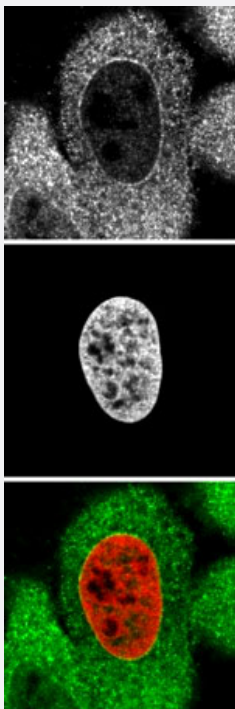
Size 100 ug

Applications



Western Blot (Cell lysate)

KPNA2 polyclonal antibody (Cat # PAB6558) staining (0.1 ug/mL) of HeLa lysate (RIPA buffer, 35 ug total protein per lane). Primary incubated for 1 hour. Detected by western blot using chemiluminescence.



Immunofluorescence

KPNA2 polyclonal antibody (Cat # PAB6558) staining (top panel and green) of 4% formaldehyde-fixed HeLa with endogenously expressed HistonH2B-GFP fusion as DNA marker (mid panel and red) . Data kindly provided by Francisco Iborra, MRC Mol. Haematol. Unit, Oxford.

Specification

Product Description

Goat polyclonal antibody raised against synthetic peptide of KPNA2.

Immunogen

A synthetic peptide corresponding to human KPNA2.

Sequence	C-QVQDGAPGTFNF
Host	Goat
Theoretical MW (kDa)	57.9
Reactivity	Human
Form	Liquid
Purification	Antigen affinity purification
Concentration	0.5 mg/mL
Quality Control Testing	Antibody Reactive Against Synthetic Peptide.
Recommend Usage	ELISA (1:32000) Western Blot (0.1-0.5 ug/mL) The optimal working dilution should be determined by the end user.
Storage Buffer	In Tris saline, pH 7.3 (0.5% BSA, 0.02% sodium azide)
Storage Instruction	Store at -20°C. Aliquot to avoid repeated freezing and thawing.
Note	This product contains sodium azide: a POISONOUS AND HAZARDOUS SUBSTANCE which should be handled by trained staff only.

Applications

- Western Blot (Cell lysate)

KPNA2 polyclonal antibody (Cat # PAB6558) staining (0.1 ug/mL) of HeLa lysate (RIPA buffer, 35 ug total protein per lane). Primary incubated for 1 hour. Detected by western blot using chemiluminescence.

- Immunofluorescence

KPNA2 polyclonal antibody (Cat # PAB6558) staining (top panel and green) of 4% formaldehyde-fixed HeLa with endogenously expressed Histone H2B-GFP fusion as DNA marker (mid panel and red). Data kindly provided by Francisco Iborra, MRC Mol. Haematol. Unit, Oxford.

- Enzyme-linked Immunoabsorbent Assay

Gene Info — KPNA2

Entrez GeneID

[3838](#)

Protein Accession#	NP_002257.1
Gene Name	KPNA2
Gene Alias	IPOA1, QIP2, RCH1, SRP1alpha
Gene Description	karyopherin alpha 2 (RAG cohort 1, importin alpha 1)
Omim ID	600685
Gene Ontology	Hyperlink
Gene Summary	<p>The import of proteins into the nucleus is a process that involves at least 2 steps. The first is an energy-independent docking of the protein to the nuclear envelope and the second is an energy-dependent translocation through the nuclear pore complex. Imported proteins require a nuclear localization sequence (NLS) which generally consists of a short region of basic amino acids or 2 such regions spaced about 10 amino acids apart. Proteins involved in the first step of nuclear import have been identified in different systems. These include the Xenopus protein importin and its yeast homolog, SRP1 (a suppressor of certain temperature-sensitive mutations of RNA polymerase I in <i>Saccharomyces cerevisiae</i>), which bind to the NLS. KPNA2 protein interacts with the NLSs of DNA helicase Q1 and SV40 T antigen and may be involved in the nuclear transport of proteins. KPNA2 also may play a role in V(D)J recombination [provided by RefSeq]</p>
Other Designations	RAG cohort 1 importin alpha 1 importin alpha 2 importin-alpha-P1 karyopherin alpha 2 pendulin

Publication Reference

- [Rch1, a protein that specifically interacts with the RAG-1 recombination-activating protein.](#)

Cuomo CA, Kirch SA, Gyuris J, Brent R, Oettinger MA.

PNAS 1994 Jun; 91(13):6156.

Disease

- [Breast Neoplasms](#)
- [Genetic Predisposition to Disease](#)
- [Ovarian Neoplasms](#)