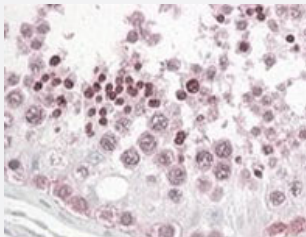


INADL polyclonal antibody

Catalog # PAB6539 Size 100 ug

Applications



Immunohistochemistry (Formalin/PFA-fixed paraffin-embedded sections)

INADL polyclonal antibody (Cat # PAB6539) (3.8 ug/mL) staining of paraffin embedded human testis. Steamed antigen retrieval with citrate buffer pH 6, AP-staining.

Specification

Product Description	Goat polyclonal antibody raised against synthetic peptide of INADL.
Immunogen	A synthetic peptide corresponding to N-terminus of human INADL.
Sequence	PENPATDKLQVLQ-C
Host	Goat
Theoretical MW (kDa)	196
Reactivity	Human
Form	Liquid
Purification	Antigen affinity purification
Concentration	0.5 mg/mL
Recommend Usage	ELISA (1:32000) Immunohistochemistry (Formalin/PFA-fixed paraffin-embedded sections) (3-6 ug/mL) The optimal working dilution should be determined by the end user.
Storage Buffer	In Tris saline, pH 7.3 (0.5% BSA, 0.02% sodium azide)

Storage Instruction

Store at -20°C.
Aliquot to avoid repeated freezing and thawing.

Note

This product contains sodium azide: a POISONOUS AND HAZARDOUS SUBSTANCE which should be handled by trained staff only.

Applications

- Immunohistochemistry (Formalin/PFA-fixed paraffin-embedded sections)

INADL polyclonal antibody (Cat # PAB6539) (3.8 ug/mL) staining of paraffin embedded human testis. Steamed antigen retrieval with citrate buffer pH 6, AP-staining.

- Enzyme-linked Immunoabsorbent Assay

Gene Info — INADL

Entrez GeneID[10207](#)**Protein Accession#**[NP_795352.2](#)**Gene Name**

INADL

Gene Alias

Cipp, FLJ26982, InaD-like, PATJ

Gene Description

InaD-like (Drosophila)

Omim ID[603199](#)**Gene Ontology**[Hyperlink](#)**Gene Summary**

This gene encodes a protein with multiple PDZ domains. PDZ domains mediate protein-protein interactions, and proteins with multiple PDZ domains often organize multimeric complexes at the plasma membrane. This protein localizes to tight junctions and to the apical membrane of epithelial cells. A similar protein in Drosophila is a scaffolding protein which tethers several members of a multimeric signaling complex in photoreceptors. [provided by RefSeq]

Other Designations

InaD-like|OTTHUMP00000010233|OTTHUMP00000046844|PALS1-associated tight junction protein|PDZ domain protein|channel-interacting PDZ domain protein|inactivation no after-potential D-like protein|protein associated to tight junctions

Publication Reference

- [Molecular characterization of a novel human PDZ domain protein with homology to INAD from Drosophila melanogaster.](#)

Philipp S, Flockerzi V.

FEBS Letters 1997 Aug; 413(2):243.

Pathway

- [Tight junction](#)

Disease

- [Tobacco Use Disorder](#)