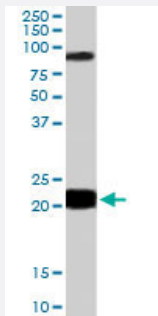


RASAL1 polyclonal antibody

Catalog # PAB6531

Size 100 ug

Applications



Western Blot (Tissue lysate)

RASAL1 polyclonal antibody (Cat # PAB6531) (0.3 ug/mL) staining of human thyroid lysate (35 ug protein in RIPA buffer). Primary incubation was 1 hour. Detected by chemiluminescence.

Specification

Product Description Goat polyclonal antibody raised against synthetic peptide of RASAL1.

Immunogen A synthetic peptide corresponding to human RASAL1.

Sequence C-QERGKAALGPLGP

Host Goat

Theoretical MW (kDa) 90

Reactivity Human

Form Liquid

Purification Antigen affinity purification

Concentration 0.5 mg/mL

Quality Control Testing Antibody Reactive Against Synthetic Peptide.

Recommend Usage
 ELISA (1:32000)
 Western Blot (0.3-1 ug/mL)
 The optimal working dilution should be determined by the end user.

Storage Buffer	In Tris saline, pH 7.3 (0.5% BSA, 0.02% sodium azide)
Storage Instruction	Store at -20°C. Aliquot to avoid repeated freezing and thawing.
Note	This product contains sodium azide: a POISONOUS AND HAZARDOUS SUBSTANCE which should be handled by trained staff only.

Applications

- Western Blot (Tissue lysate)

RASAL1 polyclonal antibody (Cat # PAB6531) (0.3 ug/mL) staining of human thyroid lysate (35 ug protein in RIPA buffer). Primary incubation was 1 hour. Detected by chemiluminescence.

- Enzyme-linked Immunoabsorbent Assay

Gene Info — RASAL1

Entrez GeneID	8437
Protein Accession#	NP_004649.1
Gene Name	RASAL1
Gene Alias	RASAL
Gene Description	RAS protein activator like 1 (GAP1 like)
Omim ID	604118
Gene Ontology	Hyperlink
Gene Summary	<p>The protein encoded by this gene is member of the GAP1 family of GTPase-activating proteins. These proteins stimulate the GTPase activity of normal RAS p21 but not its oncogenic counterpart. Acting as a suppressor of RAS function, the protein enhances the weak intrinsic GTPase activity of RAS proteins resulting in the inactive GDP-bound form of RAS, thereby allowing control of cellular proliferation and differentiation. This particular family member contains domains which are characteristic of the GAP1 subfamily of RasGAP proteins but, in contrast to the other GAP1 family members, this protein is strongly and selectively expressed in endocrine tissues. [provided by RefSeq]</p>
Other Designations	GAP1 like protein RAS protein activator like 1 RAS-GTPase-activating protein-like

Publication Reference

- [Restricted tissue expression pattern of a novel human rasGAP-related gene and its murine ortholog.](#)

Allen M, Chu S, Brill S, Stotler C, Buckler A.

Gene 1998 Sep; 218(1-2):17.