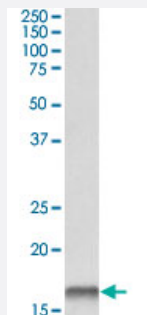


CSTB polyclonal antibody

Catalog # PAB6498

Size 100 ug

Applications



Western Blot (Tissue lysate)

CSTB polyclonal antibody (Cat # PAB6498) (0.1 ug/mL) staining of human lungs (35 ug protein in RIPA buffer). Primary incubation was 1 hour. Detected by chemiluminescence.

Specification

Product Description Goat polyclonal antibody raised against synthetic peptide of CSTB.

Immunogen A synthetic peptide corresponding to C terminus of human CSTB.

Sequence C-QTNKAKHDELTYP

Host Goat

Theoretical MW (kDa) 11.1

Reactivity Human

Form Liquid

Purification Antigen affinity purification

Concentration 0.5 mg/mL

Recommend Usage ELISA (1:32000)
Western Blot (0.1-0.3 ug/mL)
The optimal working dilution should be determined by the end user.

Storage Buffer In Tris saline, pH 7.3 (0.5% BSA, 0.02% sodium azide)

Storage Instruction

Store at -20°C.
Aliquot to avoid repeated freezing and thawing.

Note

This product contains sodium azide: a POISONOUS AND HAZARDOUS SUBSTANCE which should be handled by trained staff only.

Applications

- Western Blot (Tissue lysate)

CSTB polyclonal antibody (Cat # PAB6498) (0.1 ug/mL) staining of human lungs (35 ug protein in RIPA buffer). Primary incubation was 1 hour. Detected by chemiluminescence.

- Enzyme-linked Immunoabsorbent Assay

Gene Info — CSTB

Entrez GeneID[1476](#)**Protein Accession#**[NP_000091](#)**Gene Name**

CSTB

Gene Alias

CST6, EPM1, PME, STFB

Gene Description

cystatin B (stefin B)

Omim ID[254800 601145](#)**Gene Ontology**[Hyperlink](#)**Gene Summary**

The cystatin superfamily encompasses proteins that contain multiple cystatin-like sequences. Some of the members are active cysteine protease inhibitors, while others have lost or perhaps never acquired this inhibitory activity. There are three inhibitory families in the superfamily, including the type 1 cystatins (stefins), type 2 cystatins and kininogens. This gene encodes a stefin that functions as an intracellular thiol protease inhibitor. The protein is able to form a dimer stabilized by noncovalent forces, inhibiting papain and cathepsins L, H and B. The protein is thought to play a role in protecting against the proteases leaking from lysosomes. Evidence indicates that mutations in this gene are responsible for the primary defects in patients with progressive myoclonic epilepsy (EPM1). [provided by RefSeq]

Other Designations

CPI-B|cystatin B|liver thiol proteinase inhibitor|stefin B

Publication Reference

- [Cloning a synthetic gene for human stefin B and its expression in E. coli.](#)

Jerala R, Trstenjak M, Lenarcic B, Turk V.

FEBS Letters 1988 Oct; 239(1):41.

Application: WB-Re, Recombinant proteins

Disease

- [Cardiovascular Diseases](#)
- [Diabetes Mellitus](#)
- [Edema](#)
- [Epilepsy](#)