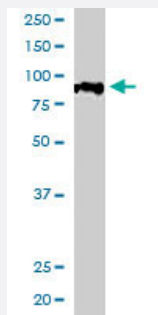


ACAP1 polyclonal antibody

Catalog # PAB6493

Size 100 ug

Applications



Western Blot (Cell lysate)

ACAP1 polyclonal antibody (Cat # PAB6493) staining (0.5 ug/mL) of Jurkat lysate (RIPA buffer, 35 ug total protein per lane). Primary incubated for 1 hour. Detected by western blot using chemiluminescence.

Specification

Product Description Goat polyclonal antibody raised against synthetic peptide of ACAP1.

Immunogen A synthetic peptide corresponding to human ACAP1.

Sequence C-EKLSRRSHDLHTL

Host Goat

Theoretical MW (kDa) 81.5

Reactivity Human

Form Liquid

Purification Antigen affinity purification

Concentration 0.5 mg/mL

Quality Control Testing Antibody Reactive Against Synthetic Peptide.

Recommend Usage
 ELISA (1:32000)
 Western Blot (0.5-2 ug/mL)
 The optimal working dilution should be determined by the end user.

Storage Buffer	In Tris saline, pH 7.3 (0.5% BSA, 0.02% sodium azide)
Storage Instruction	Store at -20°C. Aliquot to avoid repeated freezing and thawing.
Note	This product contains sodium azide: a POISONOUS AND HAZARDOUS SUBSTANCE which should be handled by trained staff only.

Applications

- Western Blot (Cell lysate)

ACAP1 polyclonal antibody (Cat # PAB6493) staining (0.5 ug/mL) of Jurkat lysate (RIPA buffer, 35 ug total protein per lane). Primary incubated for 1 hour. Detected by western blot using chemiluminescence.

- Enzyme-linked Immunoabsorbent Assay

Gene Info — ACAP1

Entrez GeneID	9744
Protein Accession#	NP_055531
Gene Name	ACAP1
Gene Alias	CENTB1, KIAA0050
Gene Description	ArfGAP with coiled-coil, ankyrin repeat and PH domains 1
Omim ID	607763
Gene Ontology	Hyperlink
Gene Summary	O
Other Designations	Arf GAP with coiled coil, ANK repeat and PH domains 1 centaurin beta1 centaurin, beta 1

Publication Reference

- [ACAPs are arf6 GTPase-activating proteins that function in the cell periphery.](#)

Jackson TR, Brown FD, Nie Z, Miura K, Foroni L, Sun J, Hsu VW, Donaldson JG, Randazzo PA.

The Journal of Cell Biology 2000 Oct; 151(3):627.

Application: WB-Ce, Human, Mouse, HeLa, Jurkat, C1R, JY, Daudi, B, HEK 293, NIH 3T3 cells, Monocytes

Pathway

- [Endocytosis](#)

Disease

- [Tobacco Use Disorder](#)