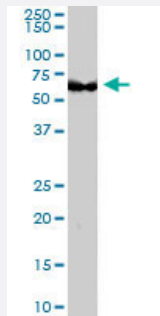


ZBTB32 polyclonal antibody

Catalog # PAB6488 Size 100 ug

Applications



Western Blot (Tissue lysate)

ZBTB32 polyclonal antibody (Cat # PAB6488) staining (2 ug/mL) of human bone marrow lysate (35 ug protein in RIPA buffer). Primary incubation was 1 hour. Detected by chemiluminescence.

Specification

Product Description	Goat polyclonal antibody raised against synthetic peptide of ZBTB32.
Immunogen	A synthetic peptide corresponding to human ZBTB32.
Sequence	RPSTSPCCPSSSTT
Host	Goat
Theoretical MW (kDa)	53
Reactivity	Human
Form	Liquid
Purification	Antigen affinity purification
Concentration	0.5 mg/mL
Quality Control Testing	Antibody Reactive Against Synthetic Peptide.
Recommend Usage	ELISA (1:8000) Western Blot (2-5 ug/mL) The optimal working dilution should be determined by the end user.

Storage Buffer	In Tris saline, pH 7.3 (0.5% BSA, 0.02% sodium azide)
Storage Instruction	Store at -20°C. Aliquot to avoid repeated freezing and thawing.
Note	This product contains sodium azide: a POISONOUS AND HAZARDOUS SUBSTANCE which should be handled by trained staff only.

Applications

- Western Blot (Tissue lysate)

ZBTB32 polyclonal antibody (Cat # PAB6488) staining (2 ug/mL) of human bone marrow lysate (35 ug protein in RIPA buffer). Primary incubation was 1 hour. Detected by chemiluminescence.

- Enzyme-linked Immunoabsorbent Assay

Gene Info — ZBTB32

Entrez GeneID	27033
Protein Accession#	NP_055198
Gene Name	ZBTB32
Gene Alias	FAXF, FAZF, Rog, TZFP, ZNF538
Gene Description	zinc finger and BTB domain containing 32
Omim ID	605859
Gene Ontology	Hyperlink
Other Designations	OTTHUMP00000045790 repressor of GATA testis zinc finger protein

Publication Reference

- [A novel BTB/POZ transcriptional repressor protein interacts with the Fanconi anemia group C protein and PLZF.](#)

Hoatlin ME, Zhi Y, Ball H, Silvey K, Melnick A, Stone S, Arai S, Hawe N, Owen G, Zelent A, Licht JD.

Blood 1999 Dec; 94(11):3737.

Application: IF, IP, WB-Tr, Human, HEK 293 EBNA cells