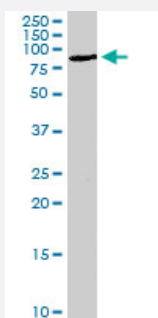


ARHGEF4 polyclonal antibody

Catalog # PAB6484

Size 100 ug

Applications



Western Blot (Tissue lysate)

ARHGEF4 polyclonal antibody (Cat # PAB6484) staining (2 ug/mL) of human brain lysate (35 ug protein in RIPA buffer). Primary incubation was 1 hour. Detected by chemiluminescence.

Specification

Product Description Goat polyclonal antibody raised against synthetic peptide of ARHGEF4.

Immunogen A synthetic peptide corresponding to human ARHGEF4.

Sequence PWEEPAGEKPSCS

Host Goat

Theoretical MW (kDa) 79.1, 76.4

Reactivity Human

Specificity This antibody is expected to recognize both human isoforms of this protein.

Form Liquid

Purification Antigen affinity purification

Concentration 0.5 mg/mL

Quality Control Testing Antibody Reactive Against Synthetic Peptide.

Recommend Usage	ELISA (1:32000) Western Blot (2-4 ug/mL) The optimal working dilution should be determined by the end user.
Storage Buffer	In Tris saline, pH 7.3 (0.5% BSA, 0.02% sodium azide)
Storage Instruction	Store at -20°C. Aliquot to avoid repeated freezing and thawing.
Note	This product contains sodium azide: a POISONOUS AND HAZARDOUS SUBSTANCE which should be handled by trained staff only.

Applications

- Western Blot (Tissue lysate)

ARHGEF4 polyclonal antibody (Cat # PAB6484) staining (2 ug/mL) of human brain lysate (35 ug protein in RIPA buffer). Primary incubation was 1 hour. Detected by chemiluminescence.

- Enzyme-linked Immunoabsorbent Assay

Gene Info — ARHGEF4

Entrez GeneID	50649
Protein Accession#	NP_056135;NP_127462
Gene Name	ARHGEF4
Gene Alias	ASEF, ASEF1, GEF4, STM6
Gene Description	Rho guanine nucleotide exchange factor (GEF) 4
Omim ID	605216
Gene Ontology	Hyperlink
Gene Summary	Rho GTPases play a fundamental role in numerous cellular processes that are initiated by extracellular stimuli that work through G protein coupled receptors. The encoded protein may form complex with G proteins and stimulate Rho-dependent signals. This protein is similar to rat collybistin protein. Alternative splicing of this gene generates two transcript variants which encode different isoforms. Also there is possibility for the usage of multiple polyadenylation sites for this gene. [provided by RefSeq]
Other Designations	APC-stimulated guanine nucleotide exchange factor Rho guanine nucleotide exchange factor 4

Publication Reference

- [Isolation of two novel human RhoGEFs, ARHGEF3 and ARHGEF4, in 3p13-21 and 2q22.](#)

Thiesen S, Kubart S, Ropers HH, Nothwang HG.

Biochemical and Biophysical Research Communications 2000 Jun; 273(1):364.

Pathway

- [Regulation of actin cytoskeleton](#)