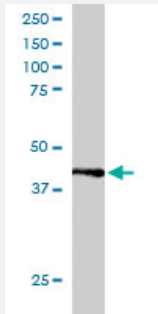


# SAE1 polyclonal antibody

Catalog # PAB6479

Size 100 ug

## Applications



### Western Blot (Cell lysate)

SAE1 polyclonal antibody (Cat # PAB6479) staining (1 ug/mL) of Jurkat lysate (RIPA buffer, 30 ug total protein per lane). Primary incubated for 1 hour. Detected by western blot using chemiluminescence.

## Specification

**Product Description** Goat polyclonal antibody raised against synthetic peptide of SAE1.

**Immunogen** A synthetic peptide corresponding to human SAE1.

**Sequence** MKGNGIVECLGPK

**Host** Goat

**Theoretical MW (kDa)** 38.4

**Reactivity** Human

**Form** Liquid

**Purification** Antigen affinity purification

**Concentration** 0.5 mg/mL

**Quality Control Testing** Antibody Reactive Against Synthetic Peptide.

**Recommend Usage**  
 ELISA (1:8000)  
 Western Blot (1 ug/mL)  
 The optimal working dilution should be determined by the end user.

Storage Buffer	In Tris saline, pH 7.3 (0.5% BSA, 0.02% sodium azide)
Storage Instruction	Store at -20°C. Aliquot to avoid repeated freezing and thawing.
Note	This product contains sodium azide: a POISONOUS AND HAZARDOUS SUBSTANCE which should be handled by trained staff only.

## Applications

- Western Blot (Cell lysate)

SAE1 polyclonal antibody (Cat # PAB6479) staining (1 ug/mL) of Jurkat lysate (RIPA buffer, 30 ug total protein per lane). Primary incubated for 1 hour. Detected by western blot using chemiluminescence.

- Enzyme-linked Immunoabsorbent Assay

## Gene Info — SAE1

Entrez GeneID	<a href="#">10055</a>
Protein Accession#	<a href="#">NP_005491</a>
Gene Name	SAE1
Gene Alias	AOS1, FLJ3091, HSPC140, SUA1
Gene Description	SUMO1 activating enzyme subunit 1
Gene Ontology	<a href="#">Hyperlink</a>
Other Designations	SUMO-1 activating enzyme E1 N subunit SUMO-1 activating enzyme subunit 1 activator of SUMO 1 sentrin/SUMO-activating protein AOS1 ubiquitin-like protein SUMO-1 activating enzyme

## Publication Reference

- [Identification of the enzyme required for activation of the small ubiquitin-like protein SUMO-1.](#)

Desterro JM, Rodriguez MS, Kemp GD, Hay RT.

The Journal of Biological Chemistry 1999 Apr; 274(15):10618.

## Pathway

- [Ubiquitin mediated proteolysis](#)