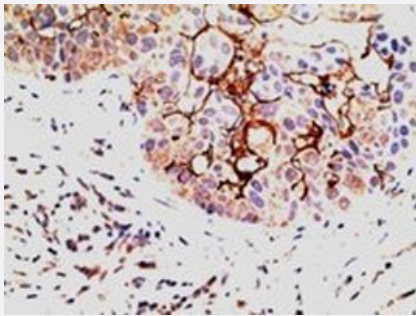


# EPS8 polyclonal antibody

Catalog # PAB6473      Size 100 ug

## Applications



### Immunohistochemistry (Formalin/PFA-fixed paraffin-embedded sections)

EPS8 polyclonal antibody (Cat # PAB6473, 5 ug/mL) staining of paraffin embedded human breast Carcinoma. Steamed antigen retrieval with citrate buffer pH 6, AP-staining.

## Specification

<b>Product Description</b>	Goat polyclonal antibody raised against synthetic peptide of EPS8.
<b>Immunogen</b>	A synthetic peptide corresponding to human EPS8.
<b>Sequence</b>	C-SGVESFDEGSSH
<b>Host</b>	Goat
<b>Theoretical MW (kDa)</b>	91.9
<b>Form</b>	Liquid
<b>Purification</b>	Antigen affinity purification
<b>Concentration</b>	0.5 mg/mL
<b>Quality Control Testing</b>	Antibody Reactive Against Synthetic Peptide.
<b>Recommend Usage</b>	ELISA (1:8000) Immunohistochemistry (Formalin/PFA-fixed paraffin-embedded sections) (5-10 ug/mL) The optimal working dilution should be determined by the end user.
<b>Storage Buffer</b>	In Tris saline, pH 7.3 (0.5% BSA, 0.02% sodium azide)

**Storage Instruction**

Store at -20°C.  
Aliquot to avoid repeated freezing and thawing.

**Note**

This product contains sodium azide: a POISONOUS AND HAZARDOUS SUBSTANCE which should be handled by trained staff only.

## Applications

- Immunohistochemistry (Formalin/PFA-fixed paraffin-embedded sections)

EPS8 polyclonal antibody (Cat # PAB6473, 5 ug/mL) staining of paraffin embedded human breast Carcinoma. Steamed antigen retrieval with citrate buffer pH 6, AP-staining.

- Enzyme-linked Immunoabsorbent Assay

## Gene Info — EPS8

**Entrez GeneID**[2059](#)**Protein Accession#**[NP\\_004438](#)**Gene Name**

EPS8

**Gene Alias**

-

**Gene Description**

epidermal growth factor receptor pathway substrate 8

**Omim ID**[600206](#)**Gene Ontology**[Hyperlink](#)**Gene Summary**

This gene encodes a member of the EPS8 family. This protein contains one PH domain and one SH3 domain. It functions as part of the EGFR pathway, though its exact role has not been determined. Highly similar proteins in other organisms are involved in the transduction of signals from Ras to Rac and growth factor-mediated actin remodeling. Alternate transcriptional splice variants of this gene have been observed but have not been thoroughly characterized. [provided by RefSeq]

**Other Designations**

-

## Publication Reference

- [Eps8, a substrate for the epidermal growth factor receptor kinase, enhances EGF-dependent mitogenic signals.](#)

Fazioli F, Minichiello L, Matoska V, Castagnino P, Miki T, Wong WT, Di Fiore PP.

The EMBO Journal 1993 Oct; 12(10):3799.

Application: IP, IP-WB, WB-Tr, Mouse, NIH/3T3, 32D cells

## Disease

- [Disease Progression](#)
- [Disease Susceptibility](#)
- [Genetic Predisposition to Disease](#)
- [HIV Infections](#)
- [Narcolepsy](#)