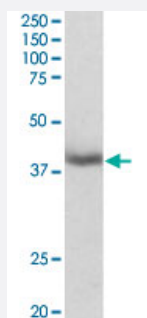


# MORF4L1 polyclonal antibody

Catalog # PAB6472

Size 100 ug

## Applications



### Western Blot (Tissue lysate)

MORF4L1 polyclonal antibody (Cat # PAB6472) (0.1 ug/mL) staining of mouse liver lysate (35 ug protein in RIPA buffer). Primary incubation was 1 hour. Detected by chemiluminescence.

## Specification

<b>Product Description</b>	Goat polyclonal antibody raised against synthetic peptide of MORF4L1.
<b>Immunogen</b>	A synthetic peptide corresponding to N terminus of human MORF4L1.
<b>Sequence</b>	APKQDPKPKFQEG-C
<b>Host</b>	Goat
<b>Theoretical MW (kDa)</b>	37.2, 41.5
<b>Reactivity</b>	Human, Mouse
<b>Form</b>	Liquid
<b>Purification</b>	Antigen affinity purification
<b>Concentration</b>	0.5 mg/mL
<b>Recommend Usage</b>	ELISA (1:128000) Western Blot (0.1-0.3 ug/mL) Immunohistochemistry (Formalin/PFA-fixed paraffin-embedded sections) (2-4 ug/mL) The optimal working dilution should be determined by the end user.

Storage Buffer	In Tris saline, pH 7.3 (0.5% BSA, 0.02% sodium azide)
Storage Instruction	Store at -20°C. Aliquot to avoid repeated freezing and thawing.
Note	This product contains sodium azide: a POISONOUS AND HAZARDOUS SUBSTANCE which should be handled by trained staff only.

## Applications

- Western Blot (Tissue lysate)

MORF4L1 polyclonal antibody (Cat # PAB6472) (0.1 ug/mL) staining of mouse liver lysate (35 ug protein in RIPA buffer). Primary incubation was 1 hour. Detected by chemiluminescence.

- Immunohistochemistry
- Enzyme-linked Immunoabsorbent Assay

## Gene Info — MORF4L1

Entrez GeneID	<a href="#">10933</a>
Protein Accession#	<a href="#">NP_006782</a>
Gene Name	MORF4L1
Gene Alias	Eaf3, FWP006, HsT17725, MGC10631, MORFRG15, MRG15, S863-6
Gene Description	mortality factor 4 like 1
Omim ID	<a href="#">607303</a>
Gene Ontology	<a href="#">Hyperlink</a>
Other Designations	MORF-related gene 15 MORF-related gene on chromosome 15

## Publication Reference

- [MRG15, a novel chromodomain protein, is present in two distinct multiprotein complexes involved in transcriptional activation.](#)

Pardo PS, Leung JK, Lucchesi JC, Pereira-Smith OM.

The Journal of Biological Chemistry 2002 Dec; 277(52):50860.

Application: WB-Tr, Human, EJ cells

## Disease

- [Tobacco Use Disorder](#)