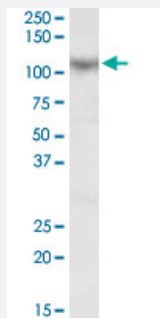


MAML1 polyclonal antibody

Catalog # PAB6471

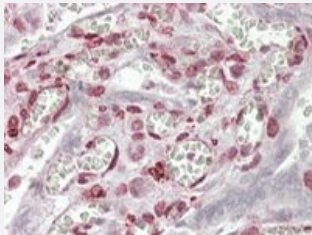
Size 100 ug

Applications



Western Blot (Tissue lysate)

MAML1 polyclonal antibody (Cat # PAB6471) (0.1 ug/mL) staining of human skeletal muscle lysate (35 ug protein in RIPA buffer). Primary incubation was 1 hour. Detected by chemiluminescence.



Immunohistochemistry (Formalin/PFA-fixed paraffin-embedded sections)

MAML1 polyclonal antibody (Cat # PAB6471) (3.8 ug/mL) staining of paraffin embedded human placenta. Steamed antigen retrieval with citrate buffer pH 6, AP-staining.

Specification

| | |
|----------------------|---|
| Product Description | Goat polyclonal antibody raised against synthetic peptide of MAML1. |
| Immunogen | A synthetic peptide corresponding to N terminus of human MAML1. |
| Sequence | VLPTCPMAEFALPR |
| Host | Goat |
| Theoretical MW (kDa) | 108 |
| Reactivity | Human |
| Form | Liquid |

| | |
|---------------------|--|
| Purification | Antigen affinity purification |
| Concentration | 0.5 mg/mL |
| Recommend Usage | ELISA (1:128000) Western blot (0.1-0.3 ug/mL) Immunohistochemistry (Formalin/PFA-fixed paraffin-embedded sections) (2.5-3.8 ug/mL) The optimal working dilution should be determined by the end user. |
| Storage Buffer | In Tris saline, pH 7.3 (0.5% BSA, 0.02% sodium azide) |
| Storage Instruction | Store at -20°C. Aliquot to avoid repeated freezing and thawing. |
| Note | This product contains sodium azide: a POISONOUS AND HAZARDOUS SUBSTANCE which should be handled by trained staff only. |

Applications

- Western Blot (Tissue lysate)

MAML1 polyclonal antibody (Cat # PAB6471) (0.1 ug/mL) staining of human skeletal muscle lysate (35 ug protein in RIPA buffer). Primary incubation was 1 hour. Detected by chemiluminescence.

- Immunohistochemistry (Formalin/PFA-fixed paraffin-embedded sections)

MAML1 polyclonal antibody (Cat # PAB6471) (3.8 ug/mL) staining of paraffin embedded human placenta. Steamed antigen retrieval with citrate buffer pH 6, AP-staining.

- Enzyme-linked Immunoabsorbent Assay

Gene Info — MAML1

| | |
|--------------------|--------------------------------|
| Entrez GeneID | 9794 |
| Protein Accession# | NP_055572 |
| Gene Name | MAML1 |
| Gene Alias | KIAA0200, Mam-1, Mam1 |
| Gene Description | mastermind-like 1 (Drosophila) |
| Omim ID | 605424 |
| Gene Ontology | Hyperlink |

Gene Summary

This protein is the human homolog of mastermind, a Drosophila protein that plays a role in the Notch signaling pathway involved in cell-fate determination. There is in vitro evidence that the human homolog forms a complex with the intracellular portion of human Notch receptors and can increase expression of a Notch-induced gene. This evidence supports its proposed function as a transcriptional co-activator in the Notch signaling pathway. [provided by RefSeq]

Other Designations

mastermind homolog|mastermind-like 1

Publication Reference

- [MAML1, a human homologue of Drosophila mastermind, is a transcriptional co-activator for NOTCH receptors.](#)

Wu L, Aster JC, Blacklow SC, Lake R, Artavanis-Tsakonas S, Griffin JD.

Nature Genetics 2000 Dec; 26(4):484.

Pathway

- [Notch signaling pathway](#)

Disease

- [Cardiovascular Diseases](#)
- [Diabetes Mellitus](#)
- [Edema](#)