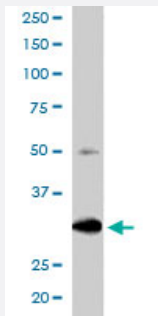


# FBXW2 polyclonal antibody

Catalog # PAB6464

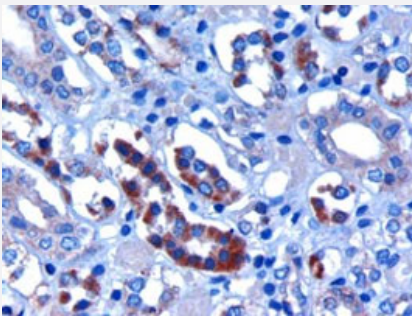
Size 100 ug

## Applications



### Western Blot (Tissue lysate)

FBXW2 polyclonal antibody (Cat # PAB6464) staining (0.3 ug/mL) of human kidney lysate (RIPA buffer, 30 ug total protein per lane). Primary incubated for 1 hour. Detected by western blot using chemiluminescence.



### Immunohistochemistry (Formalin/PFA-fixed paraffin-embedded sections)

FBXW2 polyclonal antibody (Cat # PAB6464) staining (3 ug/mL) of paraffin embedded human kidney. Microwaved antigen retrieval with citrate buffer pH 6, HRP-staining.

## Specification

|                      |   |
|----------------------|---|
| Product Description  | Goat polyclonal antibody raised against synthetic peptide of FBXW2. |
| Immunogen            | A synthetic peptide corresponding to C-terminus of human FBXW2.     |
| Sequence             | C-KRGSSFLAGEHPG   |
| Host                 | Goat  |
| Theoretical MW (kDa) | 48  |
| Reactivity           | Human, Mouse, Rat   |
| Form                 | Liquid  |

|                            |  |
|----------------------------|--|
| <b>Purification</b>        | Antigen affinity purification  |
| <b>Concentration</b>       | 0.5 mg/mL  |
| <b>Recommend Usage</b>     | ELISA (1:128000)<br>Western Blot (0.3-1.5 ug/mL)<br>Immunohistochemistry (2-3 ug/mL)<br>The optimal working dilution should be determined by the end user. |
| <b>Storage Buffer</b>      | In Tris saline, pH 7.3 (0.5% BSA, 0.02% sodium azide)  |
| <b>Storage Instruction</b> | Store at -20°C.<br>Aliquot to avoid repeated freezing and thawing.   |
| <b>Note</b>                | This product contains sodium azide: a POISONOUS AND HAZARDOUS SUBSTANCE which should be handled by trained staff only.                                     |

## Applications

- Western Blot (Tissue lysate)

FBXW2 polyclonal antibody (Cat # PAB6464) staining (0.3 ug/mL) of human kidney lysate (RIPA buffer, 30 ug total protein per lane). Primary incubated for 1 hour. Detected by western blot using chemiluminescence.

- Immunohistochemistry (Formalin/PFA-fixed paraffin-embedded sections)

FBXW2 polyclonal antibody (Cat # PAB6464) staining (3 ug/mL) of paraffin embedded human kidney. Microwaved antigen retrieval with citrate buffer pH 6, HRP-staining.

- Enzyme-linked Immunoabsorbent Assay

## Gene Info — FBXW2

|                           |   |
|---------------------------|---|
| <b>Entrez GeneID</b>      | <a href="#">26190</a>                   |
| <b>Protein Accession#</b> | <a href="#">NP_036296.2</a>             |
| <b>Gene Name</b>          | FBXW2                                   |
| <b>Gene Alias</b>         | FBW2, Fwd2, MGC117371, Md6              |
| <b>Gene Description</b>   | F-box and WD repeat domain containing 2 |
| <b>Omim ID</b>            | <a href="#">609071</a>                  |
| <b>Gene Ontology</b>      | <a href="#">Hyperlink</a>               |

**Gene Summary**

F-box proteins are an expanding family of eukaryotic proteins characterized by an approximately 40 amino acid motif, the F box. Some F-box proteins have been shown to be critical for the ubiquitin-mediated degradation of cellular regulatory proteins. In fact, F-box proteins are one of the four subunits of ubiquitin protein ligases, called SCFs. SCF ligases bring ubiquitin conjugating enzymes to substrates that are specifically recruited by the different F-box proteins. Mammalian F-box proteins are classified into three groups based on the presence of either WD-40 repeats, leucine-rich repeats, or the presence or absence of other protein-protein interacting domains. This gene encodes the second identified member of the F-box gene family and contains multiple WD-40 repeats. [provided by RefSeq]

**Other Designations**

F-box and WD-40 domain protein 2|OTTHUMP00000021994