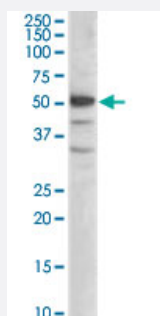


SMARCE1 polyclonal antibody

Catalog # PAB6459

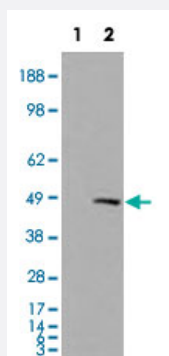
Size 100 ug

Applications



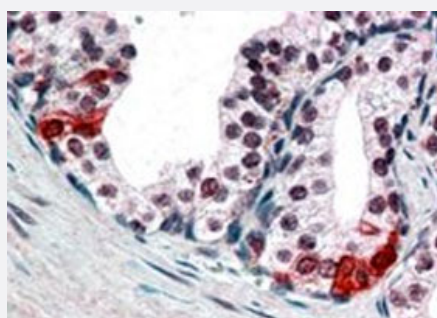
Western Blot (Cell lysate)

SMARCE1 polyclonal antibody (Cat # PAB6459) staining (0.2 ug/mL) of Jurkat lysate (RIPA buffer, 35 ug total protein per lane). Primary incubated for 1 hour. Detected by western blot using chemiluminescence.



Western Blot (Transfected lysate)

HEK293 overexpressing SMARCE1 and probed with SMARCE1 polyclonal antibody (Cat # PAB6459) (mock transfection in first lane) .



Immunohistochemistry (Formalin/PFA-fixed paraffin-embedded sections)

In paraffin embedded human prostate shows nuclear staining in secretory epithelial cells. SMARCE1 polyclonal antibody (Cat # PAB6459) recommended concentration at 3-5 ug/mL.

Specification

Product Description

Goat polyclonal antibody raised against synthetic peptide of SMARCE1.

Immunogen	A synthetic peptide corresponding to human SMARCE1.
Sequence	C-PPTDPIPEDEKKE
Host	Goat
Theoretical MW (kDa)	46.6
Reactivity	Human
Form	Liquid
Purification	Antigen affinity purification
Concentration	0.5 mg/mL
Quality Control Testing	Antibody Reactive Against Synthetic Peptide.
Recommend Usage	ELISA (1:16000) Western Blot (0.2-0.6 ug/mL) The optimal working dilution should be determined by the end user.
Storage Buffer	In Tris saline, pH 7.3 (0.5% BSA, 0.02% sodium azide)
Storage Instruction	Store at -20°C. Aliquot to avoid repeated freezing and thawing.
Note	This product contains sodium azide: a POISONOUS AND HAZARDOUS SUBSTANCE which should be handled by trained staff only.

Applications

- Western Blot (Cell lysate)

SMARCE1 polyclonal antibody (Cat # PAB6459) staining (0.2 ug/mL) of Jurkat lysate (RIPA buffer, 35 ug total protein per lane). Primary incubated for 1 hour. Detected by western blot using chemiluminescence.

- Western Blot (Transfected lysate)

HEK293 overexpressing SMARCE1 and probed with SMARCE1 polyclonal antibody (Cat # PAB6459) (mock transfection in first lane).

- Immunohistochemistry (Formalin/PFA-fixed paraffin-embedded sections)

In paraffin embedded human prostate shows nuclear staining in secretory epithelial cells. SMARCE1 polyclonal antibody (Cat # PAB6459) recommended concentration at 3-5 ug/mL.

- Enzyme-linked Immunoabsorbent Assay

Gene Info — SMARCE1

Entrez GeneID	6605
Protein Accession#	NP_003070.3
Gene Name	SMARCE1
Gene Alias	BAF57
Gene Description	SWI/SNF related, matrix associated, actin dependent regulator of chromatin, subfamily e, member 1
Omim ID	603111
Gene Ontology	Hyperlink
Gene Summary	The protein encoded by this gene is part of the large ATP-dependent chromatin remodeling complex SWI/SNF, which is required for transcriptional activation of genes normally repressed by chromatin. The encoded protein, either alone or when in the SWI/SNF complex, can bind to 4-way junction DNA, which is thought to mimic the topology of DNA as it enters or exits the nucleosome. The protein contains a DNA-binding HMG domain, but disruption of this domain does not abolish the DNA-binding or nucleosome-displacement activities of the SWI/SNF complex. Unlike most of the SWI/SNF complex proteins, this protein has no yeast counterpart. [provided by RefSeq]
Other Designations	SWI/SNF-related matrix-associated actin-dependent regulator of chromatin e1 mammalian chromatin remodeling complex BRG1-associated factor 57

Publication Reference

- [Architectural DNA binding by a high-mobility-group/kinesin-like subunit in mammalian SWI/SNF-related complexes.](#)

Wang W, Chi T, Xue Y, Zhou S, Kuo A, Crabtree GR.

PNAS 1998 Jan; 95(2):492.

Application: IP, WB-Ce, WB-Tr, Human, Mouse, Rat, C2F3, C33A, DT, F9, FAO, HeLa, HepG2, Jurkat, PC12, SW13 cells

Disease

- [Asthma](#)