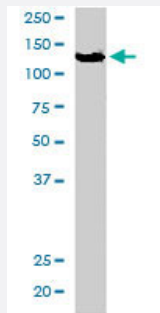


ZFYVE20 polyclonal antibody

Catalog # PAB6458

Size 100 ug

Applications



Western Blot (Cell lysate)

ZFYVE20 polyclonal antibody (Cat # PAB6458) staining (0.3 ug/mL) of A-431 lysate (35 ug protein in RIPA buffer). Primary incubation was 1 hour. Detected by chemiluminescence.

Specification

Product Description Goat polyclonal antibody raised against synthetic peptide of ZFYVE20.

Immunogen A synthetic peptide corresponding to human ZFYVE20.

Sequence C-ELKHTLAKQKGGTD

Host Goat

Theoretical MW (kDa) 88.9

Reactivity Human

Form Liquid

Purification Antigen affinity purification

Concentration 0.5 mg/mL

Quality Control Testing Antibody Reactive Against Synthetic Peptide.

Recommend Usage
 ELISA (1:64000)
 Western Blot (0.3-1.5 ug/mL)
 The optimal working dilution should be determined by the end user.

Storage Buffer	In Tris saline, pH 7.3 (0.5% BSA, 0.02% sodium azide)
Storage Instruction	Store at -20°C. Aliquot to avoid repeated freezing and thawing.
Note	This product contains sodium azide: a POISONOUS AND HAZARDOUS SUBSTANCE which should be handled by trained staff only.

Applications

- Western Blot (Cell lysate)

ZFYVE20 polyclonal antibody (Cat # PAB6458) staining (0.3 ug/mL) of A-431 lysate (35 ug protein in RIPA buffer). Primary incubation was 1 hour. Detected by chemiluminescence.

- Enzyme-linked Immunoabsorbent Assay

Gene Info — ZFYVE20

Entrez GeneID	64145
Protein Accession#	NP_071735
Gene Name	ZFYVE20
Gene Alias	FLJ34993, MGC126210, Rabenosyn-5
Gene Description	zinc finger, FYVE domain containing 20
Omim ID	609511
Gene Ontology	Hyperlink
Gene Summary	O
Other Designations	FYVE-finger-containing Rab5 effector protein rabenosyn-5 OTTHUMP00000160299

Publication Reference

- [Rabenosyn-5, a novel Rab5 effector, is complexed with hVPS45 and recruited to endosomes through a FYVE finger domain.](#)

Nielsen E, Christoforidis S, Uttenweiler-Joseph S, Miaczynska M, Dewitte F, Wilm M, Hoflack B, Zerial M.

The Journal of Cell Biology 2000 Oct; 151(3):601.

Application: WB-Ce, Human, A431 cells

Pathway

- [Endocytosis](#)