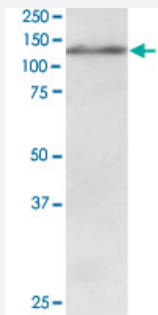


USP11 polyclonal antibody

Catalog # PAB6408

Size 100 ug

Applications



Western Blot (Cell lysate)

USP11 polyclonal antibody (Cat # PAB6408) staining (1 ug/mL) of Jurkat lysate (RIPA buffer, 30 ug total protein per lane). Primary incubated for 1 hour. Detected by western blot using chemiluminescence.

Specification

Product Description Goat polyclonal antibody raised against synthetic peptide of USP11.

Immunogen A synthetic peptide corresponding to human USP11.

Sequence CSSPPSSEFMDVN

Host Goat

Theoretical MW (kDa) 110

Reactivity Human

Form Liquid

Purification Antigen affinity purification

Concentration 0.5 mg/mL

Quality Control Testing Antibody Reactive Against Synthetic Peptide.

Recommend Usage
 ELISA (1:8000)
 Western Blot (1-3 ug/mL)
 The optimal working dilution should be determined by the end user.

Storage Buffer	In Tris saline, pH 7.3 (0.5% BSA, 0.02% sodium azide)
Storage Instruction	Store at -20°C. Aliquot to avoid repeated freezing and thawing.
Note	This product contains sodium azide: a POISONOUS AND HAZARDOUS SUBSTANCE which should be handled by trained staff only.

Applications

- Western Blot (Cell lysate)

USP11 polyclonal antibody (Cat # PAB6408) staining (1 ug/mL) of Jurkat lysate (RIPA buffer, 30 ug total protein per lane). Primary incubated for 1 hour. Detected by western blot using chemiluminescence.

- Enzyme-linked Immunoabsorbent Assay

Gene Info — USP11

Entrez GeneID	8237
Protein Accession#	NP_004642
Gene Name	USP11
Gene Alias	UHX1
Gene Description	ubiquitin specific peptidase 11
Omim ID	300050
Gene Ontology	Hyperlink

Gene Summary	Protein ubiquitination controls many intracellular processes, including cell cycle progression, transcriptional activation, and signal transduction. This dynamic process, involving ubiquitin conjugating enzymes and deubiquitinating enzymes, adds and removes ubiquitin. Deubiquitinating enzymes are cysteine proteases that specifically cleave ubiquitin from ubiquitin-conjugated protein substrates. This gene encodes a deubiquitinating enzyme which lies in a gene cluster on chromosome Xp11.23 [provided by RefSeq]
Other Designations	deubiquitinating enzyme 11 ubiquitin carboxyl-terminal hydrolase, X-linked ubiquitin specific protease 11 ubiquitin thiolesterase 11 ubiquitin-specific processing protease 11

Publication Reference

- [Structural and functional characterization of the USP11 deubiquitinating enzyme, which interacts with the RanGTP-associated protein RanBPM.](#)

Ideguchi H, Ueda A, Tanaka M, Yang J, Tsuji T, Ohno S, Hagiwara E, Aoki A, Ishigatsubo Y.

The Biochemical Journal 2002 Oct; 367(Pt 1):87.

Application: IF, WB, Human, HeLa cells