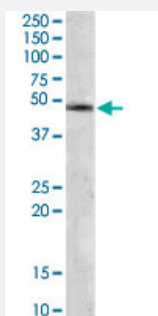


# COPS2 polyclonal antibody

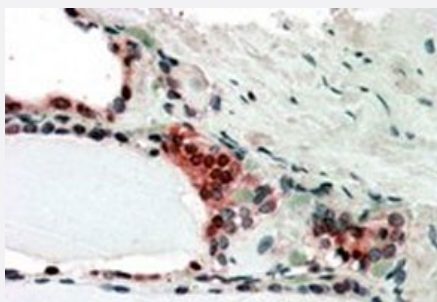
Catalog # PAB6396      Size 100 ug

## Applications



### Western Blot (Cell lysate)

COPS2 polyclonal antibody (Cat # PAB6396) staining (1 ug/mL) of NIH/3T3 lysates (RIPA buffer, 30 ug total protein per lane). Primary incubated for 1 hour. Detected by western blot using chemiluminescence.



### Immunohistochemistry (Formalin/PFA-fixed paraffin-embedded sections)

In paraffin embedded human thyroid gland shows nuclear and cytoplasm staining in activated epithelial cells. COPS2 polyclonal antibody (Cat # PAB6396) recommended concentration, 3-5 ug/mL.

## Specification

Product Description	Goat polyclonal antibody raised against synthetic peptide of COPS2.
Immunogen	A synthetic peptide corresponding to human COPS2.
Sequence	C-LNSLNQAVVSKLA
Host	Goat
Theoretical MW (kDa)	51.6, 52.4
Reactivity	Human, Mouse
Form	Liquid

Purification	Antigen affinity purification
Concentration	0.5 mg/mL
Quality Control Testing	Antibody Reactive Against Synthetic Peptide.
Recommend Usage	ELISA (1:16000) Western blot (1-3 ug/mL) Immunohistochemistry (Formalin/PFA-fixed paraffin-embedded sections) (3-5 ug/mL) The optimal working dilution should be determined by the end user.
Storage Buffer	In Tris saline, pH 7.3 (0.5% BSA, 0.02% sodium azide)
Storage Instruction	Store at -20°C. Aliquot to avoid repeated freezing and thawing.
Note	This product contains sodium azide: a POISONOUS AND HAZARDOUS SUBSTANCE which should be handled by trained staff only.

## Applications

- Western Blot (Cell lysate)

COPS2 polyclonal antibody (Cat # PAB6396) staining (1 ug/mL) of NIH/3T3 lysates (RIPA buffer, 30 ug total protein per lane). Primary incubated for 1 hour. Detected by western blot using chemiluminescence.

- Immunohistochemistry (Formalin/PFA-fixed paraffin-embedded sections)

In paraffin embedded human thyroid gland shows nuclear and cytoplasm staining in activated epithelial cells. COPS2 polyclonal antibody (Cat # PAB6396) recommended concentration, 3-5 ug/mL.

- Enzyme-linked Immunoabsorbent Assay

## Gene Info — COPS2

Entrez GeneID	<a href="#">9318</a>
Protein Accession#	<a href="#">NP_004227.1</a>
Gene Name	COPS2
Gene Alias	ALIEN, CSN2, SGN2, TRIP15
Gene Description	COP9 constitutive photomorphogenic homolog subunit 2 (Arabidopsis)
Omim ID	<a href="#">604508</a>

## Gene Ontology

[Hyperlink](#)

## Other Designations

COP9 constitutive photomorphogenic homolog subunit 2|COP9 signalosome complex subunit 2|JAB1-containing signalosome subunit 2|thyroid receptor interacting protein 15

## Publication Reference

- [Various members of the E2F transcription factor family interact in vivo with the corepressor alien.](#)

Escher N, Kob R, Tenbaum SP, Eisold M, Baniahmad A, von Eggeling F, Melle C.

Journal of Proteome Research 2007 Mar; 6(3):1158.

Application: IP, WB, Human, U2OS cells