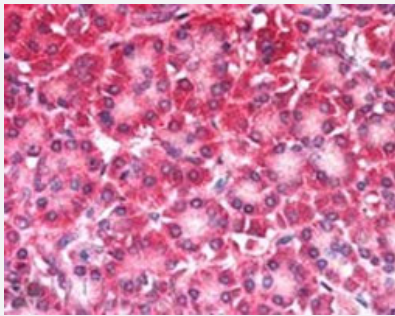


CARD6 polyclonal antibody

Catalog # PAB6377 Size 100 ug

Applications



Immunohistochemistry (Formalin/PFA-fixed paraffin-embedded sections)

CARD6 polyclonal antibody (Cat # PAB6377, 5 ug/mL) staining of paraffin embedded human pancreas. Steamed antigen retrieval with citrate buffer pH 6, AP-staining.

Specification

Product Description	Goat polyclonal antibody raised against synthetic peptide of CARD6.
Immunogen	A synthetic peptide corresponding to human CARD6.
Sequence	ATESTPSEIERER-C
Host	Goat
Theoretical MW (kDa)	116
Reactivity	Human
Form	Liquid
Purification	Antigen affinity purification
Concentration	0.5 mg/mL
Quality Control Testing	Antibody Reactive Against Synthetic Peptide.
Recommend Usage	ELISA (1:32000) Immunohistochemistry (Formalin/PFA-fixed paraffin-embedded sections) (5-10 ug/mL) The optimal working dilution should be determined by the end user.

Storage Buffer	In Tris saline, pH 7.3 (0.5% BSA, 0.02% sodium azide)
Storage Instruction	Store at -20°C. Aliquot to avoid repeated freezing and thawing.
Note	This product contains sodium azide: a POISONOUS AND HAZARDOUS SUBSTANCE which should be handled by trained staff only.

Applications

- Immunohistochemistry (Formalin/PFA-fixed paraffin-embedded sections)

CARD6 polyclonal antibody (Cat # PAB6377, 5 ug/mL) staining of paraffin embedded human pancreas. Steamed antigen retrieval with citrate buffer pH 6, AP-staining.

- Enzyme-linked Immunoabsorbent Assay

Gene Info — CARD6

Entrez GeneID	84674
Protein Accession#	NP_115976
Gene Name	CARD6
Gene Alias	CINCIN1
Gene Description	caspase recruitment domain family, member 6
Omim ID	609986
Gene Ontology	Hyperlink
Gene Summary	This gene encodes a protein that contains a caspase recruitment domain (CARD), an antiparallel six-helical bundle that mediates homotypic protein-protein interactions. The encoded protein is a microtubule-associated protein that has been shown to interact with receptor-interacting protein kinases and positively modulate signal transduction pathways converging on activation of the inducible transcription factor NF-κB. [provided by RefSeq]
Other Designations	CARD-containing inhibitor of Nod1 and Cardiac-induced NF-κB activation caspase recruitment domain protein 6

Publication Reference

- [CARD6 is a modulator of NF-kappa B activation by Nod1- and Cardiak-mediated pathways.](#)

Stehlik C, Hayashi H, Pio F, Godzik A, Reed JC.

The Journal of Biological Chemistry 2003 Aug; 278(34):31941.