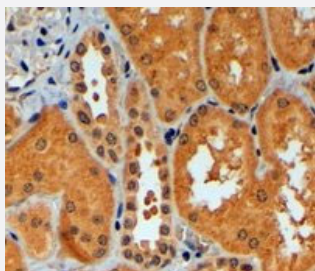


# TRIM11 polyclonal antibody

Catalog # PAB6371      Size 100 ug

## Applications



### Immunohistochemistry (Formalin/PFA-fixed paraffin-embedded sections)

TRIM11 polyclonal antibody (Cat # PAB6371) (4 ug/mL) staining of paraffin embedded human kidney. Steamed antigen retrieval with citrate buffer pH 6, HRP-staining.

## Specification

<b>Product Description</b>	Goat polyclonal antibody raised against synthetic peptide of TRIM11.
<b>Immunogen</b>	A synthetic peptide corresponding to C-terminus of human TRIM11.
<b>Sequence</b>	CRPKGGSGLTAPQ
<b>Host</b>	Goat
<b>Theoretical MW (kDa)</b>	52.8
<b>Reactivity</b>	Human
<b>Form</b>	Liquid
<b>Purification</b>	Antigen affinity purification
<b>Concentration</b>	0.5 mg/mL
<b>Recommend Usage</b>	ELISA (1:32000) Immunohistochemistry (Formalin/PFA-fixed paraffin-embedded sections) (4-6 ug/mL) The optimal working dilution should be determined by the end user.
<b>Storage Buffer</b>	In Tris saline, pH 7.3 (0.5% BSA, 0.02% sodium azide)

**Storage Instruction**

Store at -20°C.  
Aliquot to avoid repeated freezing and thawing.

**Note**

This product contains sodium azide: a POISONOUS AND HAZARDOUS SUBSTANCE which should be handled by trained staff only.

## Applications

- Immunohistochemistry (Formalin/PFA-fixed paraffin-embedded sections)

TRIM11 polyclonal antibody (Cat # PAB6371) (4 ug/mL) staining of paraffin embedded human kidney. Steamed antigen retrieval with citrate buffer pH 6, HRP-staining.

- Enzyme-linked Immunoabsorbent Assay

## Gene Info — TRIM11

**Entrez GeneID**[81559](#)**Protein Accession#**[NP\\_660215.1](#)**Gene Name**

TRIM11

**Gene Alias**

BIA1, RNF92

**Gene Description**

tripartite motif-containing 11

**Omim ID**[607868](#)**Gene Ontology**[Hyperlink](#)**Gene Summary**

The protein encoded by this gene is a member of the tripartite motif (TRIM) family. The TRIM motif includes three zinc-binding domains, a RING, a B-box type 1 and a B-box type 2, and a coiled-coil region. This protein localizes to the nucleus and the cytoplasm. Its function has not been identified. [provided by RefSeq]

**Other Designations**

-

## Disease

- [Muscular Dystrophies](#)