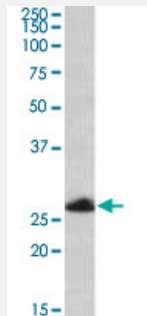


TRIM40 polyclonal antibody

Catalog # PAB6361

Size 100 ug

Applications



Western Blot (Tissue lysate)

TRIM40 polyclonal antibody (Cat # PAB6361)(0.5 ug/mL) staining of human placenta lysate (35 ug protein in RIPA buffer). Primary incubation was 1 hour. Detected by chemiluminescence.

Specification

Product Description Goat polyclonal antibody raised against synthetic peptide of TRIM40.

Immunogen A synthetic peptide corresponding to C-terminus of human TRIM40.

Sequence C-GVSELLQPPQKL

Host Goat

Theoretical MW (kDa) 26.1

Reactivity Human

Form Liquid

Purification Antigen affinity purification

Concentration 0.5 mg/mL

Recommend Usage ELISA (1:32000)
Western Blot (0.5-2 ug/mL)
The optimal working dilution should be determined by the end user.

Storage Buffer In Tris saline, pH 7.3 (0.5% BSA, 0.02% sodium azide)

Storage Instruction

Store at -20°C.
Aliquot to avoid repeated freezing and thawing.

Note

This product contains sodium azide: a POISONOUS AND HAZARDOUS SUBSTANCE which should be handled by trained staff only.

Applications

- Western Blot (Tissue lysate)

TRIM40 polyclonal antibody (Cat # PAB6361)(0.5 ug/mL) staining of human placenta lysate (35 ug protein in RIPA buffer). Primary incubation was 1 hour. Detected by chemiluminescence.

- Enzyme-linked Immunoabsorbent Assay

Gene Info — TRIM40

Entrez GeneID[135644](#)**Protein Accession#**[NP_619645.1](#)**Gene Name**

TRIM40

Gene Alias

RNF35

Gene Description

tripartite motif-containing 40

Gene Ontology[Hyperlink](#)**Other Designations**

OTTHUMP00000062384|ring finger RNF35|ring finger protein 40

Publication Reference

- [The RING finger. A novel protein sequence motif related to the zinc finger.](#)

Freemont PS.

Annals of the New York Academy of Sciences 1993 Jun; 684:174.

Disease

- [Genetic Predisposition to Disease](#)

- [Lupus Erythematosus](#)
- [Multiple Sclerosis](#)