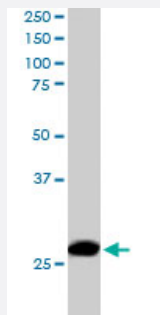


ANP32B polyclonal antibody

Catalog # PAB6358

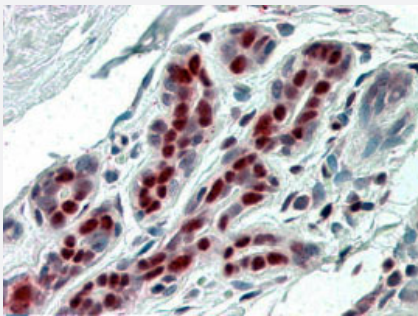
Size 100 ug

Applications



Western Blot (Tissue lysate)

ANP32B polyclonal antibody (Cat # PAB6358) staining (1ug/ml) of human lymph node lysate (RIPA buffer, 30ug total protein per lane) . Primary incubated for 1 hour. Detected by western blot using chemiluminescence.



Immunohistochemistry (Formalin/PFA-fixed paraffin-embedded sections)

Immunohistochemical staining of human breast with ANP32B polyclonal antibody (Cat # PAB6358) (3.8 ug/mL). Steamed antigen retrieval with citrate buffer pH 6, AP-staining.

Specification

Product Description	Goat polyclonal antibody raised against synthetic peptide of ANP32B.
Immunogen	A synthetic peptide corresponding to human ANP32B.
Sequence	C-KRKRETDDEGEDD
Host	Goat
Theoretical MW (kDa)	28.8
Reactivity	Human

Specificity	This antibody does NOT recognize theTNF family member also known as APRIL - Gene ID number 8741.
Form	Liquid
Purification	Antigen affinity purification
Concentration	0.5 mg/mL
Quality Control Testing	Antibody Reactive Against Synthetic Peptide.
Recommend Usage	Immunohistochemistry (Formalin/PFA-fixed paraffin-embedded sections)(3-5 ug/mL) ELISA (1:16000) Western Blot (0.1-0.3 ug/mL) The optimal working dilution should be determined by the end user.
Storage Buffer	In Tris saline, pH 7.3 (0.5% BSA, 0.02% sodium azide)
Storage Instruction	Store at -20°C. Aliquot to avoid repeated freezing and thawing.
Note	This product contains sodium azide: a POISONOUS AND HAZARDOUS SUBSTANCE which should be handled by trained staff only.

Applications

- Western Blot (Tissue lysate)

ANP32B polyclonal antibody (Cat # PAB6358) staining (1ug/ml) of human lymph node lysate (RIPA buffer, 30ug total protein per lane) . Primary incubated for 1 hour. Detected by western blot using chemiluminescence.

- Immunohistochemistry (Formalin/PFA-fixed paraffin-embedded sections)

Immunohistochemical staining of human breast with ANP32B polyclonal antibody (Cat # PAB6358) (3.8 ug/mL). Steamed antigen retrieval with citrate buffer pH 6, AP-staining.

- Enzyme-linked Immunoabsorbent Assay

Gene Info — ANP32B

Entrez GeneID	10541
Protein Accession#	NP_006392.1
Gene Name	ANP32B
Gene Alias	APRIL, PHAPI2, SSP29

Gene Description	acidic (leucine-rich) nuclear phosphoprotein 32 family, member B
Gene Ontology	Hyperlink
Gene Summary	O
Other Designations	OTTHUMP00000021759 OTTHUMP00000063770 acidic protein rich in leucines

Publication Reference

- [Cloning and characterization of a new silver-stainable protein SSP29, a member of the LRR family.](#)

Zhu L, Perlaky L, Henning D, Valdez BC.

Biochemistry and Molecular Biology International 1997 Aug; 42(5):927.

Application: IF, WB-Ce, Human, HeLa, MCF-7 cells