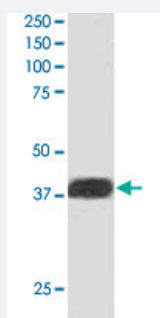


NIF3L1 polyclonal antibody

Catalog # PAB6347

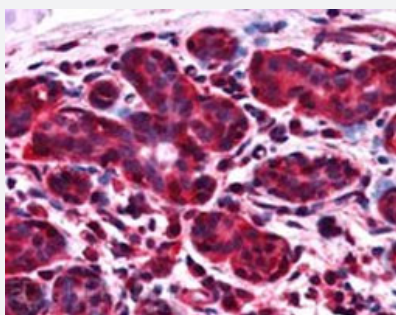
Size 100 ug

Applications



Western Blot (Tissue lysate)

NIF3L1 polyclonal antibody (Cat # PAB6347) staining (1ug/ml) of human heart lysate (RIPA buffer, 30ug total protein per lane) . Primary incubated for 1 hour. Detected by western blot using chemiluminescence.



Immunohistochemistry (Formalin/PFA-fixed paraffin-embedded sections)

NIF3L1 polyclonal antibody (Cat # PAB6347, 2.5 ug/mL) staining of paraffin embedded human breast. Steamed antigen retrieval with citrate buffer pH 6, AP-staining.

Specification

Product Description	Goat polyclonal antibody raised against synthetic peptide of NIF3L1.
Immunogen	A synthetic peptide corresponding to human NIF3L1.
Sequence	C-ILSETDRDPLQVV
Host	Goat
Theoretical MW (kDa)	42, 39
Reactivity	Human
Form	Liquid

Purification	Antigen affinity purification
Concentration	0.5 mg/mL
Quality Control Testing	Antibody Reactive Against Synthetic Peptide.
Recommend Usage	ELISA (1:32000) Western blot (0.2-1 ug/mL) Immunohistochemistry (Formalin/PFA-fixed paraffin-embedded sections) (2-4 ug/mL) The optimal working dilution should be determined by the end user.
Storage Buffer	In Tris saline, pH 7.3 (0.5% BSA, 0.02% sodium azide)
Storage Instruction	Store at -20°C. Aliquot to avoid repeated freezing and thawing.
Note	This product contains sodium azide: a POISONOUS AND HAZARDOUS SUBSTANCE which should be handled by trained staff only.

Applications

- Western Blot (Tissue lysate)

NIF3L1 polyclonal antibody (Cat # PAB6347) staining (1ug/ml) of human heart lysate (RIPA buffer, 30ug total protein per lane) . Primary incubated for 1 hour. Detected by western blot using chemiluminescence.

- Immunohistochemistry (Formalin/PFA-fixed paraffin-embedded sections)

NIF3L1 polyclonal antibody (Cat # PAB6347, 2.5 ug/mL) staining of paraffin embedded human breast. Steamed antigen retrieval with citrate buffer pH 6, AP-staining.

- Enzyme-linked Immunoabsorbent Assay

Gene Info — NIF3L1

Entrez GeneID	60491
Protein Accession#	NP_068596
Gene Name	NIF3L1
Gene Alias	ALS2CR1, CALS-7, MDS015
Gene Description	NIF3 NGG1 interacting factor 3-like 1 (S. pombe)
Omim ID	605778

Gene Ontology

[Hyperlink](#)

Gene Summary

S.pombe homolog)-like 1|NIF3 NGG1 interacting factor 3-like 1|amyotrophic lateral sclerosis 2 (juvenile) chromosome region

Other Designations

NIF3 (Ngg1 interacting factor 3, S.pombe homolog)-like 1|NIF3 NGG1 interacting factor 3-like 1|amyotrophic lateral sclerosis 2 (juvenile) chromosome region, candidate 1

Publication Reference

- [Cloning and characterization of three novel genes, ALS2CR1, ALS2CR2, and ALS2CR3, in the juvenile amyotrophic lateral sclerosis \(ALS2\) critical region at chromosome 2q33-q34: candidate genes for ALS2.](#)

Hadano S, Yanagisawa Y, Skaug J, Fichter K, Nasir J, Martindale D, Koop BF, Scherer SW, Nicholson DW, Rouleau GA, Ikeda J, Hayden MR.

Genomics 2001 Jan; 71(2):200.