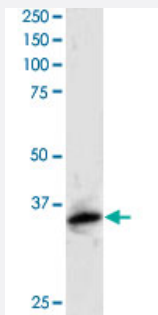


PSMF1 polyclonal antibody

Catalog # PAB6339

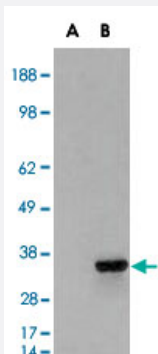
Size 100 ug

Applications



Western Blot (Tissue lysate)

PSMF1 polyclonal antibody (Cat # PAB6339) staining (1 ug/mL) of human kidney lysate (RIPA buffer, 30 ug total protein per lane). Primary incubated for 1 hour. Detected by western blot using chemiluminescence.



Western Blot (Transfected lysate)

HEK293 overexpressing PSMF1 and probed with PSMF1 polyclonal antibody (Cat # PAB6339) (mock transfection in first lane), tested by Origene.

Specification

Product Description	Goat polyclonal antibody raised against synthetic peptide of PSMF1.
Immunogen	A synthetic peptide corresponding to human PSMF1.
Sequence	C-DHLPPPGYDDMYL
Host	Goat
Theoretical MW (kDa)	29.8
Reactivity	Human

Specificity	This antibody is expected to recognize isoform 1 (NP_006805.1 and NP_848693.1) only, not isoform 2 (NP_848694.1).
Form	Liquid
Purification	Antigen affinity purification
Concentration	0.5 mg/mL
Quality Control Testing	Antibody Reactive Against Synthetic Peptide.
Recommend Usage	ELISA (1:32000) Western Blot (0.5-2 ug/mL) The optimal working dilution should be determined by the end user.
Storage Buffer	In Tris saline, pH 7.3 (0.5% BSA, 0.02% sodium azide)
Storage Instruction	Store at -20°C. Aliquot to avoid repeated freezing and thawing.
Note	This product contains sodium azide: a POISONOUS AND HAZARDOUS SUBSTANCE which should be handled by trained staff only.

Applications

- Western Blot (Tissue lysate)

PSMF1 polyclonal antibody (Cat # PAB6339) staining (1 ug/mL) of human kidney lysate (RIPA buffer, 30 ug total protein per lane). Primary incubated for 1 hour. Detected by western blot using chemiluminescence.

- Western Blot (Transfected lysate)

HEK293 overexpressing PSMF1 and probed with PSMF1 polyclonal antibody (Cat # PAB6339) (mock transfection in first lane), tested by Origene.

- Enzyme-linked Immunoabsorbent Assay

Gene Info — PSMF1

Entrez GeneID	9491
Protein Accession#	NP_006805.1;NP_848693.1
Gene Name	PSMF1
Gene Alias	PI31

Gene Description	proteasome (prosome, macropain) inhibitor subunit 1 (PI31)
Gene Ontology	Hyperlink
Gene Summary	<p>The 26S proteasome is a multicatalytic proteinase complex with a highly ordered structure composed of 2 complexes, a 20S core and a 19S regulator. The 20S core is composed of 4 rings of 28 non-identical subunits; 2 rings are composed of 7 alpha subunits and 2 rings are composed of 7 beta subunits. The 19S regulator is composed of a base, which contains 6 ATPase subunits and 2 non-ATPase subunits, and a lid, which contains up to 10 non-ATPase subunits. Proteasomes are distributed throughout eukaryotic cells at a high concentration and cleave peptides in an ATP/ubiquitin-dependent process in a non-lysosomal pathway. An essential function of a modified proteasome, the immunoproteasome, is the processing of class I MHC peptides. This gene encodes a protein that inhibits the activation of the proteasome by the 11S and 19S regulators. Alternative transcripts have been identified for this gene. [provided by RefSeq]</p>
Other Designations	proteasome inhibitor hP131 subunit proteasome inhibitor subunit 1

Publication Reference

- [cDNA cloning, expression, and functional characterization of PI31, a proline-rich inhibitor of the proteasome.](#)

McCutchen-Maloney SL, Matsuda K, Shimbara N, Binns DD, Tanaka K, Slaughter CA, DeMartino GN.

The Journal of Biological Chemistry 2000 Jun; 275(24):18557.

Application: WB-Re, Recombinant protein

Pathway

- [Proteasome](#)