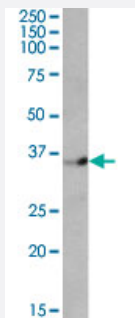


DPF1 polyclonal antibody

Catalog # PAB6328

Size 100 ug

Applications



Western Blot (Tissue lysate)

DPF1 polyclonal antibody (Cat # PAB6328) (1 ug/mL) staining of human cerebellum lysate (35 ug protein in RIPA buffer). Primary incubation was 1 hour. Detected by chemiluminescence.

Specification

Product Description Goat polyclonal antibody raised against synthetic peptide of DPF1.

Immunogen A synthetic peptide corresponding to C-terminus of human DPF1.

Sequence C-HLKEKASAYITLT

Host Goat

Theoretical MW (kDa) 37.9

Reactivity Human

Form Liquid

Purification Antigen affinity purification

Concentration 0.5 mg/mL

Recommend Usage ELISA (1:2000)
Western blot (1-3 ug/mL)
The optimal working dilution should be determined by the end user.

Storage Buffer In Tris saline, pH 7.3 (0.5% BSA, 0.02% sodium azide)

Storage Instruction

Store at -20°C.
Aliquot to avoid repeated freezing and thawing.

Note

This product contains sodium azide: a POISONOUS AND HAZARDOUS SUBSTANCE which should be handled by trained staff only.

Applications

- Western Blot (Tissue lysate)

DPF1 polyclonal antibody (Cat # PAB6328) (1 ug/mL) staining of human cerebellum lysate (35 ug protein in RIPA buffer). Primary incubation was 1 hour. Detected by chemiluminescence.

- Enzyme-linked Immunoabsorbent Assay

Gene Info — DPF1

Entrez GeneID[8193](#)**Protein Accession#**[NP_001128627.1;NP_004638.2;NP_001128628.1](#)**Gene Name**

DPF1

Gene Alias

MGC150428, MGC150429, NEUD4, neuro-d4

Gene Description

D4, zinc and double PHD fingers family 1

Omim ID[601670](#)**Gene Ontology**[Hyperlink](#)**Gene Summary**

O

Other Designations

neuro-d4 homolog

Publication Reference

- [The d4 gene family in the human genome.](#)

Chestkov AV, Baka ID, Kost MV, Georgiev GP, Buchman VL.
Genomics 1996 Aug; 36(1):174.

Application: WB-Ce, WB-Tr, Human, Rat, Mammalian cells