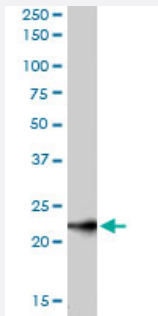


UBE2T polyclonal antibody

Catalog # PAB6306

Size 100 ug

Applications



Western Blot (Cell lysate)

UBE2T polyclonal antibody (Cat # PAB6306) staining (0.1 ug/mL) of K-562 lysate (35 ug protein in RIPA buffer). Primary incubation was 1 hour. Detected by chemiluminescence.

Specification

Product Description Goat polyclonal antibody raised against synthetic peptide of UBE2T.

Immunogen A synthetic peptide corresponding to human UBE2T.

Sequence C-QLVGIEKKFHPDV

Host Goat

Theoretical MW (kDa) 22.5

Reactivity Human

Form Liquid

Purification Antigen affinity purification

Concentration 0.5 mg/mL

Quality Control Testing Antibody Reactive Against Synthetic Peptide.

Recommend Usage
 ELISA (1:16000)
 Western Blot (0.1-0.3 ug/mL)
 The optimal working dilution should be determined by the end user.

| | |
|---------------------|--|
| Storage Buffer | In Tris saline, pH 7.3 (0.5% BSA, 0.02% sodium azide) |
| Storage Instruction | Store at -20°C. Aliquot to avoid repeated freezing and thawing. |
| Note | This product contains sodium azide: a POISONOUS AND HAZARDOUS SUBSTANCE which should be handled by trained staff only. |

Applications

- Western Blot (Cell lysate)

UBE2T polyclonal antibody (Cat # PAB6306) staining (0.1 ug/mL) of K-562 lysate (35 ug protein in RIPA buffer). Primary incubation was 1 hour. Detected by chemiluminescence.

- Enzyme-linked Immunoabsorbent Assay

Gene Info — UBE2T

| | |
|--------------------|--|
| Entrez GeneID | 29089 |
| Protein Accession# | NP_054895.1 |
| Gene Name | UBE2T |
| Gene Alias | HSPC150, PIG50 |
| Gene Description | ubiquitin-conjugating enzyme E2T (putative) |
| Omim ID | 610538 |
| Gene Ontology | Hyperlink |
| Gene Summary | The covalent conjugation of ubiquitin to proteins regulates diverse cellular pathways and proteins. Ubiquitin is transferred to a target protein through a concerted action of a ubiquitin-activating enzyme (E1), a ubiquitin-conjugating enzyme (E2), such as UBE2T, and a ubiquitin ligase (E3) (Machida et al., 2006 [PubMed 16916645]).[supplied by OMIM] |
| Other Designations | HSPC150 protein similar to ubiquitin-conjugating enzyme OTTHUMP00000038808 ubiquitin conjugating enzyme |