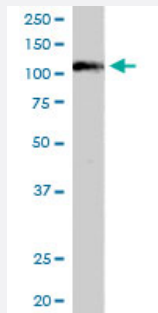


# SART1 polyclonal antibody

Catalog # PAB6298

Size 100 ug

## Applications



### Western Blot (Cell lysate)

SART1 polyclonal antibody (Cat # PAB6298) staining (0.03 ug/mL) of HeLa lysate (35 ug protein in RIPA buffer). Primary incubation was 1 hour. Detected by chemiluminescence.

## Specification

<b>Product Description</b>	Goat polyclonal antibody raised against synthetic peptide of SART1.
<b>Immunogen</b>	A synthetic peptide corresponding to human SART1.
<b>Sequence</b>	GSSKKHRGEKEAA-C
<b>Host</b>	Goat
<b>Theoretical MW (kDa)</b>	90.3
<b>Reactivity</b>	Human
<b>Specificity</b>	This antibody is expected to recognize both the human SART1(259) and SART1(800) proteins.
<b>Form</b>	Liquid
<b>Purification</b>	Antigen affinity purification
<b>Concentration</b>	0.5 mg/mL
<b>Quality Control Testing</b>	Antibody Reactive Against Synthetic Peptide.

<b>Recommend Usage</b>	ELISA (1:64000) Western Blot (0.03-0.1 ug/mL) The optimal working dilution should be determined by the end user.
<b>Storage Buffer</b>	In Tris saline, pH 7.3 (0.5% BSA, 0.02% sodium azide)
<b>Storage Instruction</b>	Store at -20°C. Aliquot to avoid repeated freezing and thawing.
<b>Note</b>	This product contains sodium azide: a POISONOUS AND HAZARDOUS SUBSTANCE which should be handled by trained staff only.

## Applications

- Western Blot (Cell lysate)

SART1 polyclonal antibody (Cat # PAB6298) staining (0.03 ug/mL) of HeLa lysate (35 ug protein in RIPA buffer). Primary incubation was 1 hour. Detected by chemiluminescence.

- Enzyme-linked Immunoabsorbent Assay

## Gene Info — SART1

<b>Entrez GeneID</b>	<a href="#">9092</a>
<b>Protein Accession#</b>	<a href="#">NP_005137.1</a>
<b>Gene Name</b>	SART1
<b>Gene Alias</b>	Ara1, HOMS1, MGC2038, SART1259, SNRNP110, Snu66
<b>Gene Description</b>	squamous cell carcinoma antigen recognized by T cells
<b>Omim ID</b>	<a href="#">605941</a>
<b>Gene Ontology</b>	<a href="#">Hyperlink</a>

<b>Gene Summary</b>	This gene encodes two proteins, the SART1(800) protein expressed in the nucleus of the majority of proliferating cells, and the SART1(259) protein expressed in the cytosol of epithelial cancers. The SART1(259) protein is translated by the mechanism of -1 frameshifting during posttranscriptional regulation; its full-length sequence is not published yet. The two encoded proteins are thought to be involved in the regulation of proliferation. Both proteins have tumor-rejection antigens. The SART1(259) protein possesses tumor epitopes capable of inducing HLA-A2402-restricted cytotoxic T lymphocytes in cancer patients. This SART1(259) antigen may be useful in specific immunotherapy for cancer patients and may serve as a paradigmatic tool for the diagnosis and treatment of patients with atopy. The SART1(259) protein is found to be essential for the recruitment of the tri-snRNP to the pre-spliceosome in the spliceosome assembly pathway. [provided by RefSeq]
---------------------	---

**Other Designations**

IgE autoantigen|SART1(259) protein|SART1(800) protein|U4/U6.U5 tri-snRNP-associated 110 kDa protein|small nuclear ribonucleoprotein 110kDa (U4/U6.U5)|squamous cell carcinoma antigen recognised by T cells|squamous cell carcinoma antigen recognized by T cel

**Publication Reference**

- [A proteomic study of SUMO-2 target proteins.](#)

Vertegaal AC, Ogg SC, Jaffray E, Rodriguez MS, Hay RT, Andersen JS, Mann M, Lamond AI.

The Journal of Biological Chemistry 2004 Aug; 279(32):33791.

**Disease**

- [Adenocarcinoma](#)
- [Genetic Predisposition to Disease](#)
- [Male Urogenital Diseases](#)
- [Pancreatic Neoplasms](#)
- [Prostate cancer](#)
- [Prostatic Neoplasms](#)