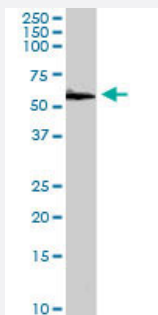


PDIA3 polyclonal antibody

Catalog # PAB6295 Size 100 ug

Applications



Western Blot (Cell lysate)

PDIA3 polyclonal antibody (Cat # PAB6295) staining (1 ug/mL) of HepG2 lysate (RIPA buffer, 35 ug total protein per lane). Primary incubated for 1 hour. Detected by western blot using chemiluminescence.

Specification

Product Description Goat polyclonal antibody raised against synthetic peptide of PDIA3.

Immunogen A synthetic peptide corresponding to human PDIA3.

Sequence C-EEKPKKKKKAQEDL

Host Goat

Theoretical MW (kDa) 56.8

Reactivity Human, Mouse

Form Liquid

Purification Antigen affinity purification

Concentration 0.5 mg/mL

Quality Control Testing Antibody Reactive Against Synthetic Peptide.

Recommend Usage
 ELISA (1:8000)
 Western Blot (1-3 ug/mL)
 The optimal working dilution should be determined by the end user.

Storage Buffer	In Tris saline, pH 7.3 (0.5% BSA, 0.02% sodium azide)
Storage Instruction	Store at -20°C. Aliquot to avoid repeated freezing and thawing.
Note	This product contains sodium azide: a POISONOUS AND HAZARDOUS SUBSTANCE which should be handled by trained staff only.

Applications

- Western Blot (Cell lysate)

PDIA3 polyclonal antibody (Cat # PAB6295) staining (1 ug/mL) of HepG2 lysate (RIPA buffer, 35 ug total protein per lane). Primary incubated for 1 hour. Detected by western blot using chemiluminescence.

- Enzyme-linked Immunoabsorbent Assay

Gene Info — PDIA3

Entrez GeneID	2923
Protein Accession#	NP_005304.3
Gene Name	PDIA3
Gene Alias	ER60, ERp57, ERp60, ERp61, GRP57, GRP58, HsT17083, P58, PI-PLC
Gene Description	protein disulfide isomerase family A, member 3
Omim ID	602046
Gene Ontology	Hyperlink

Gene Summary	This gene encodes a protein of the endoplasmic reticulum that interacts with lectin chaperones calreticulin and calnexin to modulate folding of newly synthesized glycoproteins. The protein was once thought to be a phospholipase; however, it has been demonstrated that the protein actually has protein disulfide isomerase activity. It is thought that complexes of lectins and this protein mediate protein folding by promoting formation of disulfide bonds in their glycoprotein substrates. [provided by RefSeq]
Other Designations	58 kDa microsomal protein OTTHUMP00000041709 endoplasmic reticulum P58 glucose regulated protein, 58kDa phospholipase C-alpha protein disulfide isomerase-associated 3 protein disulfide-isomerase A3

Publication Reference

- [Structures of the human gene for the protein disulfide isomerase-related polypeptide ERp60 and a processed gene and assignment of these genes to 15q15 and 1q21.](#)

Koivunen P, Horelli-Kuitunen N, Helaakoski T, Karvonen P, Jaakkola M, Palotie A, Kivirikko KI.

Genomics 1997 Jun; 42(3):397.

Pathway

- [Antigen processing and presentation](#)

Disease

- [Genetic Predisposition to Disease](#)
- [Prostatic Neoplasms](#)