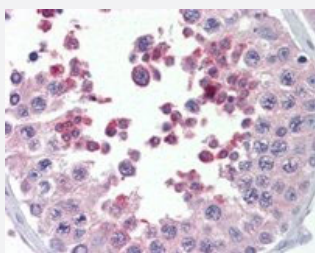


MLL4 polyclonal antibody

Catalog # PAB6291 Size 100 ug

Applications



Immunohistochemistry (Formalin/PFA-fixed paraffin-embedded sections)

MLL4 polyclonal antibody (Cat # PAB6291) (5 ug/mL) staining of paraffin embedded human testis. Steamed antigen retrieval with citrate buffer pH 6, AP-staining.

Specification

Product Description Goat polyclonal antibody raised against synthetic peptide of MLL4.

Immunogen A synthetic peptide corresponding to human MLL4.

Sequence CNCGAKRCRRFLN

Host Goat

Theoretical MW (kDa) 312

Reactivity Human

Form Liquid

Purification Antigen affinity purification

Concentration 0.5 mg/mL

Quality Control Testing Antibody Reactive Against Synthetic Peptide.

Recommend Usage ELISA (1:128000)
Immunohistochemistry (Formalin/PFA-fixed paraffin-embedded sections) (5-10 ug/mL)
The optimal working dilution should be determined by the end user.

Storage Buffer	In Tris saline, pH 7.3 (0.5% BSA, 0.02% sodium azide)
Storage Instruction	Store at -20°C. Aliquot to avoid repeated freezing and thawing.
Note	This product contains sodium azide: a POISONOUS AND HAZARDOUS SUBSTANCE which should be handled by trained staff only.

Applications

- Immunohistochemistry (Formalin/PFA-fixed paraffin-embedded sections)

MLL4 polyclonal antibody (Cat # PAB6291) (5 ug/mL) staining of paraffin embedded human testis. Steamed antigen retrieval with citrate buffer pH 6, AP-staining.

- Enzyme-linked Immunoabsorbent Assay

Gene Info — MLL4

Entrez GeneID	9757
Protein Accession#	NP_055542
Gene Name	MLL4
Gene Alias	HRX2, KIAA0304, MLL2, TRX2, WBP7
Gene Description	myeloid/lymphoid or mixed-lineage leukemia 4
Omim ID	606834
Gene Ontology	Hyperlink
Gene Summary	This gene encodes a protein which contains multiple domains including a CXXC zinc finger, three PHD zinc fingers, two FY-rich domains, and a SET (suppressor of variegation, enhancer of zeste, and trithorax) domain. The SET domain is a conserved C-terminal domain that characterizes proteins of the MLL (mixed-lineage leukemia) family. This gene is ubiquitously expressed in adult tissues. It is also amplified in solid tumor cell lines, and may be involved in human cancer. Two alternatively spliced transcript variants encoding distinct isoforms have been reported for this gene, however, the full length nature of the shorter transcript is not known. [provided by RefSeq]
Other Designations	WW domain binding protein 7 mixed lineage leukemia gene homolog 2 trithorax homologue 2

Publication Reference

- [Dynamic regulation of BDNF gene expression by estradiol and lncRNA HOTAIR.](#)

Paromita Deb, Avisankar Chini, Prarthana Guha, Ashcharya Rishi, Arunoday Bhan, Blake Brady, Linda I Perrotti, Subhrangsu S Mandal.

Gene 2024 Mar; 897:148055.

Application: ChIP, Mouse, HT22 cells

- [MLL2, the second human homolog of the Drosophila trithorax gene, maps to 19q13.1 and is amplified in solid tumor cell lines.](#)

Huntsman DG, Chin SF, Muleris M, Batley SJ, Collins VP, Wiedemann LM, Aparicio S, Caldas C.

Oncogene 1999 Dec; 18(56):7975.