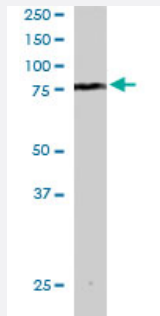


EZH1 polyclonal antibody

Catalog # PAB6289

Size 100 ug

Applications



Western Blot (Cell lysate)

EZH1 polyclonal antibody (Cat # PAB6289) staining (2 ug/mL) of MOLT 4 lysate (RIPA buffer, 30 ug total protein per lane). Primary incubated for 1 hour. Detected by western blot using chemiluminescence.

Specification

Product Description Goat polyclonal antibody raised against synthetic peptide of EZH1.

Immunogen A synthetic peptide corresponding to human EZH1.

Sequence EIPNPPTSKCITY

Host Goat

Theoretical MW (kDa) 85.3

Reactivity Human

Form Liquid

Purification Antigen affinity purification

Concentration 0.5 mg/mL

Quality Control Testing Antibody Reactive Against Synthetic Peptide.

Recommend Usage
 ELISA (1:2000)
 Western blot (2-6 ug/mL)
 The optimal working dilution should be determined by the end user.

Storage Buffer	In Tris saline, pH 7.3 (0.5% BSA, 0.02% sodium azide)
Storage Instruction	Store at -20°C. Aliquot to avoid repeated freezing and thawing.
Note	This product contains sodium azide: a POISONOUS AND HAZARDOUS SUBSTANCE which should be handled by trained staff only.

Applications

- Western Blot (Cell lysate)

EZH1 polyclonal antibody (Cat # PAB6289) staining (2 ug/mL) of MOLT 4 lysate (RIPA buffer, 30 ug total protein per lane). Primary incubated for 1 hour. Detected by western blot using chemiluminescence.

- Enzyme-linked Immunoabsorbent Assay

Gene Info — EZH1

Entrez GeneID	2145
Protein Accession#	NP_001982.2
Gene Name	EZH1
Gene Alias	KIAA0388
Gene Description	enhancer of zeste homolog 1 (Drosophila)
Omim ID	601674
Gene Ontology	Hyperlink
Gene Summary	EZH1 is a component of a noncanonical Polycomb repressive complex-2 (PRC2) that mediates methylation of histone H3 (see MIM 602812) lys27 (H3K27) and functions in the maintenance of embryonic stem cell pluripotency and plasticity (Shen et al., 2008 [PubMed 19026780]).[supplied by OMIM]
Other Designations	enhancer of zeste homolog 1

Publication Reference

- [Characterization of EZH1, a human homolog of Drosophila Enhancer of zeste near BRCA1.](#)

Abel KJ, Brody LC, Valdes JM, Erdos MR, McKinley DR, Castilla LH, Merajver SD, Couch FJ, Friedman LS, Ostermeyer EA, Lynch ED, King MC, Welch PL, Osborne-Lawrence S, Spillman M, Bowcock AM, Collins FS, Weber BL.

Genomics 1996 Oct; 37(2):161.

Disease

- [Head and Neck Neoplasms](#)
- [Neoplasm Recurrence](#)
- [Neoplasms](#)