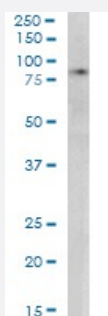


# SETDB2 polyclonal antibody

Catalog # PAB6288

Size 100 ug

## Applications



### Western Blot (Tissue lysate)

SETDB2 polyclonal antibody (Cat # PAB6288) (0.3 ug/mL) staining of Nuclear HeLa lysate (35 ug protein in RIPA buffer). Detected by chemiluminescence.

## Specification

**Product Description** Goat polyclonal antibody raised against synthetic peptide of SETDB2.

**Immunogen** A synthetic peptide corresponding to human SETDB2.

**Sequence** GEKNGDAKTFWME-C

**Host** Goat

**Theoretical MW (kDa)** 81.9, 80.7

**Reactivity** Human

**Form** Liquid

**Purification** Antigen affinity purification

**Concentration** 0.5 mg/mL

**Quality Control Testing** Antibody Reactive Against Synthetic Peptide.

**Recommend Usage**  
 ELISA (1:1000)  
 Western Blot (1-3 ug/mL)  
 The optimal working dilution should be determined by the end user.

Storage Buffer	In Tris saline, pH 7.3 (0.5% BSA, 0.02% sodium azide)
Storage Instruction	Store at -20°C. Aliquot to avoid repeated freezing and thawing.
Note	This product contains sodium azide: a POISONOUS AND HAZARDOUS SUBSTANCE which should be handled by trained staff only.

## Applications

- Western Blot (Tissue lysate)

SETDB2 polyclonal antibody (Cat # PAB6288) (0.3 ug/mL) staining of Nuclear HeLa lysate (35 ug protein in RIPA buffer).  
Detected by chemiluminescence.

- Enzyme-linked Immunoabsorbent Assay

## Gene Info — SETDB2

Entrez GeneID	<a href="#">83852</a>
Protein Accession#	<a href="#">NP_114121.1</a>
Gene Name	SETDB2
Gene Alias	C13orf4, CLLD8, CLLL8, DKFZp586I0123, DKFZp761J1217, KMT1F
Gene Description	SET domain, bifurcated 2
Omim ID	<a href="#">607865</a>
Gene Ontology	<a href="#">Hyperlink</a>
Gene Summary	Proteins that contain a SET domain, such as SETDB2, modulate gene expression epigenetically through histone H3 (see MIM 601128) methylation. SETDB2 is likely a histone H3 methyltransferase, as it contains both the active site and flanking cysteine residues required for catalytic activity (Zhang et al., 2003 [PubMed 12754510]).[supplied by OMIM]
Other Designations	CLLL8 protein OTTHUMP00000018417

## Publication Reference

- [Cloning and characterization of CLLD6, CLLD7, and CLLD8, novel candidate genes for leukemogenesis at chromosome 13q14, a region commonly deleted in B-cell chronic lymphocytic leukemia.](#)

Mabuchi H, Fujii H, Calin G, Alder H, Negrini M, Rassenti L, Kipps TJ, Bullrich F, Croce CM.

Cancer Research 2001 Apr; 61(7):2870.

## Pathway

- [Lysine degradation](#)

## Disease

- [Asthma](#)
- [Eczema](#)
- [Hypersensitivity](#)
- [Respiratory Sounds](#)
- [Rhinitis](#)