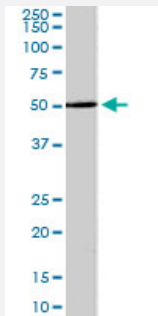


PRDM11 polyclonal antibody

Catalog # PAB6287

Size 100 ug

Applications



Western Blot (Cell lysate)

PRDM11 polyclonal antibody (Cat # PAB6287) staining (2 ug/mL) of A-549 lysate (35 ug protein in RIPA buffer). Primary incubation was 1 hour. Detected by chemiluminescence.

Specification

Product Description Goat polyclonal antibody raised against synthetic peptide of PRDM11.

Immunogen A synthetic peptide corresponding to human PRDM11.

Sequence LSEGRVRSGLCGG

Host Goat

Theoretical MW (kDa) 57.9

Reactivity Human

Form Liquid

Purification Antigen affinity purification

Concentration 0.5 mg/mL

Quality Control Testing Antibody Reactive Against Synthetic Peptide.

Recommend Usage
 ELISA (1:32000)
 Western Blot (2-3 ug/mL)
 The optimal working dilution should be determined by the end user.

Storage Buffer	In Tris saline, pH 7.3 (0.5% BSA, 0.02% sodium azide)
Storage Instruction	Store at -20°C. Aliquot to avoid repeated freezing and thawing.
Note	This product contains sodium azide: a POISONOUS AND HAZARDOUS SUBSTANCE which should be handled by trained staff only.

Applications

- Western Blot (Cell lysate)

PRDM11 polyclonal antibody (Cat # PAB6287) staining (2 ug/mL) of A-549 lysate (35 ug protein in RIPA buffer). Primary incubation was 1 hour. Detected by chemiluminescence.

- Enzyme-linked Immunoabsorbent Assay

Gene Info — PRDM11

Entrez GeneID	56981
Protein Accession#	NP_064614.2
Gene Name	PRDM11
Gene Alias	PFM8
Gene Description	PR domain containing 11
Gene Ontology	Hyperlink
Other Designations	PR-domain containing protein 11

Publication Reference

- [SET domains and histone methylation.](#)

Xiao B, Wilson JR, Gamblin SJ.

Current Opinion in Structural Biology 2003 Dec; 13(6):699.