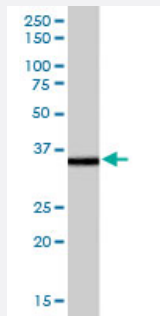


MRPL3 polyclonal antibody

Catalog # PAB6274 Size 100 ug

Applications



Western Blot (Cell lysate)

MRPL3 polyclonal antibody (Cat # PAB6274) staining (1 ug/mL) of HepG2 cell lysate (RIPA buffer, 35 ug total protein per lane). Primary incubated for 1 hour. Detected by western blot using chemiluminescence.

Specification

Product Description Goat polyclonal antibody raised against synthetic peptide of MRPL3.

Immunogen A synthetic peptide corresponding to human MRPL3.

Sequence NVCQPGAPSITFA

Host Goat

Theoretical MW (kDa) 38.6

Reactivity Human

Form Liquid

Purification Antigen affinity purification

Concentration 0.5 mg/mL

Quality Control Testing Antibody Reactive Against Synthetic Peptide.

Recommend Usage
 ELISA (1:32000)
 Western Blot (1-3 ug/mL)
 The optimal working dilution should be determined by the end user.

Storage Buffer	In Tris saline, pH 7.3 (0.5% BSA, 0.02% sodium azide)
Storage Instruction	Store at -20°C. Aliquot to avoid repeated freezing and thawing.
Note	This product contains sodium azide: a POISONOUS AND HAZARDOUS SUBSTANCE which should be handled by trained staff only.

Applications

- Western Blot (Cell lysate)

MRPL3 polyclonal antibody (Cat # PAB6274) staining (1 ug/mL) of HepG2 cell lysate (RIPA buffer, 35 ug total protein per lane). Primary incubated for 1 hour. Detected by western blot using chemiluminescence.

- Enzyme-linked Immunoabsorbent Assay

Gene Info — MRPL3

Entrez GeneID	11222
Protein Accession#	NP_009139.1
Gene Name	MRPL3
Gene Alias	MRL3, RPML3
Gene Description	mitochondrial ribosomal protein L3
Omim ID	607118
Gene Ontology	Hyperlink

Gene Summary	Mammalian mitochondrial ribosomal proteins are encoded by nuclear genes and help in protein synthesis within the mitochondrion. Mitochondrial ribosomes (mitoribosomes) consist of a small 28 S subunit and a large 39S subunit. They have an estimated 75% protein to rRNA composition compared to prokaryotic ribosomes, where this ratio is reversed. Another difference between mammalian mitoribosomes and prokaryotic ribosomes is that the latter contain a 5S rRNA. Among different species, the proteins comprising the mitoribosome differ greatly in sequence, and sometimes in biochemical properties, which prevents easy recognition by sequence homology. This gene encodes a 39S subunit protein that belongs to the L3P ribosomal protein family. A pseudogene corresponding to this gene is found on chromosome 13q. [provided by RefSeq]
--------------	---

Other Designations	mitochondrial 60S ribosomal protein L3 ribosomal protein, mitochondrial, L3
--------------------	---

Publication Reference

- [Cloning and characterization of a human ribosomal protein gene with enhanced expression in fetal and neoplastic cells.](#)

Ou JH, Yen TS, Wang YF, Kam WK, Rutter WJ.

Nucleic Acids Research 1987 Nov; 15(21):8919.