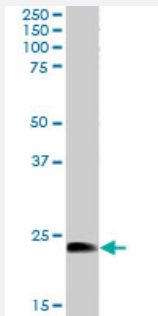


# HSPB8 polyclonal antibody

Catalog # PAB6266

Size 100 ug

## Applications



### Western Blot (Tissue lysate)

HSPB8 polyclonal antibody (Cat # PAB6266) staining (1 ug/mL) of human muscle lysate (RIPA buffer, 30 ug total protein per lane). Primary incubated for 1 hour. Detected by western blot using chemiluminescence.

## Specification

**Product Description** Goat polyclonal antibody raised against synthetic peptide of HSPB8.

**Immunogen** A synthetic peptide corresponding to human HSPB8.

**Sequence** NELPQDSQEVTCT

**Host** Goat

**Theoretical MW (kDa)** 21.6

**Reactivity** Human

**Form** Liquid

**Purification** Antigen affinity purification

**Concentration** 0.5 mg/mL

**Quality Control Testing** Antibody Reactive Against Synthetic Peptide.

**Recommend Usage**  
 ELISA (1:32000)  
 Western Blot (0.5-1 ug/mL)  
 The optimal working dilution should be determined by the end user.

Storage Buffer	In Tris saline, pH 7.3 (0.5% BSA, 0.02% sodium azide)
Storage Instruction	Store at -20°C. Aliquot to avoid repeated freezing and thawing.
Note	This product contains sodium azide: a POISONOUS AND HAZARDOUS SUBSTANCE which should be handled by trained staff only.

## Applications

- Western Blot (Tissue lysate)

HSPB8 polyclonal antibody (Cat # PAB6266) staining (1 ug/mL) of human muscle lysate (RIPA buffer, 30 ug total protein per lane). Primary incubated for 1 hour. Detected by western blot using chemiluminescence.

- Enzyme-linked Immunoabsorbent Assay

## Gene Info — HSPB8

Entrez GeneID	<a href="#">26353</a>
Protein Accession#	<a href="#">NP_055180.1</a>
Gene Name	HSPB8
Gene Alias	CMT2L, DHMN2, E2IG1, H11, HMN2, HMN2A, HSP22
Gene Description	heat shock 22kDa protein 8
Omim ID	<a href="#">158590</a> <a href="#">608014</a> <a href="#">608673</a>
Gene Ontology	<a href="#">Hyperlink</a>
Gene Summary	The protein encoded by this gene belongs to the superfamily of small heat-shock proteins containing a conservative alpha-crystallin domain at the C-terminal part of the molecule. The expression of this gene is induced by estrogen in estrogen receptor-positive breast cancer cells, and this protein also functions as a chaperone in association with Bag3, a stimulator of macroautophagy. Thus, this gene appears to be involved in regulation of cell proliferation, apoptosis, and carcinogenesis, and mutations in this gene have been associated with different neuromuscular diseases, including Charcot-Marie-Tooth disease. [provided by RefSeq]
Other Designations	E2-induced gene 1 heat shock 27kDa protein 8 heat shock protein beta-8 protein kinase H11 small stress protein-like protein HSP22

## Publication Reference

- [HSP22, a new member of the small heat shock protein superfamily, interacts with mimic of phosphorylated HSP27 \(\(3D\)HSP27\).](#)

Benndorf R, Sun X, Gilmont RR, Biederman KJ, Molloy MP, Goodmurphy CW, Cheng H, Andrews PC, Welsh MJ.

The Journal of Biological Chemistry 2001 Jul; 276(29):26753.

Application: WB-Tr, Monkey, COS-7 cells

## Disease

- [Genetic Predisposition to Disease](#)
- [Head and Neck Neoplasms](#)
- [Lung Neoplasms](#)
- [Neoplasm Recurrence](#)
- [Neoplasms](#)
- [Pulmonary Disease](#)
- [Urinary Bladder Neoplasms](#)
- [Werner syndrome](#)