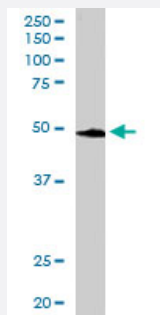


# BRF2 polyclonal antibody

Catalog # PAB6262      Size 100 ug

## Applications



### Western Blot (Cell lysate)

BRF2 polyclonal antibody (Cat # PAB6262) staining (1.5 ug/mL) of HeLa lysate (RIPA buffer, 35 ug total protein per lane). Primary incubated for 1 hour. Detected by western blot using chemiluminescence.

## Specification

**Product Description** Goat polyclonal antibody raised against synthetic peptide of BRF2.

**Immunogen** A synthetic peptide corresponding to human BRF2.

**Sequence** C-QAARQAATSVPNPP

**Host** Goat

**Theoretical MW (kDa)** 46.5

**Reactivity** Human

**Form** Liquid

**Purification** Antigen affinity purification

**Concentration** 0.5 mg/mL

**Quality Control Testing** Antibody Reactive Against Synthetic Peptide.

**Recommend Usage**  
 ELISA (1:16000)  
 Western Blot (1-3 ug/mL)  
 The optimal working dilution should be determined by the end user.

<b>Storage Buffer</b>	In Tris saline, pH 7.3 (0.5% BSA, 0.02% sodium azide)
<b>Storage Instruction</b>	Store at -20°C. Aliquot to avoid repeated freezing and thawing.
<b>Note</b>	This product contains sodium azide: a POISONOUS AND HAZARDOUS SUBSTANCE which should be handled by trained staff only.

## Applications

- Western Blot (Cell lysate)

BRF2 polyclonal antibody (Cat # PAB6262) staining (1.5 ug/mL) of HeLa lysate (RIPA buffer, 35 ug total protein per lane). Primary incubated for 1 hour. Detected by western blot using chemiluminescence.

- Enzyme-linked Immunoabsorbent Assay

## Gene Info — BRF2

<b>Entrez GeneID</b>	<a href="#">55290</a>
<b>Protein Accession#</b>	<a href="#">NP_060780</a>
<b>Gene Name</b>	BRF2
<b>Gene Alias</b>	BRFU, FLJ11052, TFIIIB50
<b>Gene Description</b>	BRF2, subunit of RNA polymerase III transcription initiation factor, BRF1-like
<b>Omim ID</b>	<a href="#">607013</a>
<b>Gene Ontology</b>	<a href="#">Hyperlink</a>
<b>Gene Summary</b>	This gene encodes one of the multiple subunits of the RNA polymerase III transcription factor complex required for transcription of genes with promoter elements upstream of the initiation site. The product of this gene, a TFIIIB-like factor, is directly recruited to the TATA-box of polymerase III small nuclear RNA gene promoters through its interaction with the TATA-binding protein. [provided by RefSeq]
<b>Other Designations</b>	RNA polymerase III transcription initiation factor BRF2 RNA polymerase III transcription initiation factor BRFU transcription factor IIB- related factor, TFIIIB50

## Publication Reference

- [Different human TFIIIB activities direct RNA polymerase III transcription from TATA-containing and TATA-less promoters.](#)

Schramm L, Pendergrast PS, Sun Y, Hernandez N.

Genes & Development 2000 Oct; 14(20):2650.

Application: WB, Human, HeLa cells, Recombinant protein