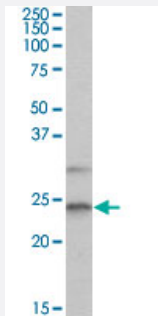


MAD2L1 polyclonal antibody

Catalog # PAB6237 Size 100 ug

Applications



Western Blot (Cell lysate)

MAD2L1 polyclonal antibody (Cat # PAB6237, 2 ug/mL) staining of HEK293 lysate (35 ug protein in RIPA buffer) . Primary incubation was 1 hour. Detected by chemiluminescence.

Specification

Product Description Goat polyclonal antibody raised against synthetic peptide of MAD2L1.

Immunogen A synthetic peptide corresponding to human MAD2L1.

Sequence C-KVNSMVAYKIPVND

Host Goat

Theoretical MW (kDa) 23.5

Reactivity Human

Form Liquid

Purification Antigen affinity purification

Concentration 0.5 mg/mL

Quality Control Testing Antibody Reactive Against Synthetic Peptide.

Recommend Usage
 ELISA (1:32000)
 Western blot (2-4 ug/mL)
 The optimal working dilution should be determined by the end user.

Storage Buffer	In Tris saline, pH 7.3 (0.5% BSA, 0.02% sodium azide)
Storage Instruction	Store at -20°C. Aliquot to avoid repeated freezing and thawing.
Note	This product contains sodium azide: a POISONOUS AND HAZARDOUS SUBSTANCE which should be handled by trained staff only.

Applications

- Western Blot (Cell lysate)

MAD2L1 polyclonal antibody (Cat # PAB6237, 2 ug/mL) staining of HEK293 lysate (35 ug protein in RIPA buffer) . Primary incubation was 1 hour. Detected by chemiluminescence.

- Enzyme-linked Immunoabsorbent Assay

Gene Info — MAD2L1

Entrez GeneID	4085
Protein Accession#	NP_002349
Gene Name	MAD2L1
Gene Alias	HSMAD2, MAD2
Gene Description	MAD2 mitotic arrest deficient-like 1 (yeast)
Omim ID	601467
Gene Ontology	Hyperlink
Gene Summary	MAD2L1 is a component of the mitotic spindle assembly checkpoint that prevents the onset of an anaphase until all chromosomes are properly aligned at the metaphase plate. MAD2L1 is related to the MAD2L2 gene located on chromosome 1. A MAD2 pseudogene has been mapped to chromosome 14. [provided by RefSeq]
Other Designations	MAD2 (mitotic arrest deficient, yeast, homolog)-like 1 MAD2-like 1 MAD2-like protein 1 mitotic arrest deficient, yeast, homolog-like 1

Publication Reference

- [Identification of a human mitotic checkpoint gene: hsMAD2.](#)

Y Li, R Benezra.

Science 1996 Oct; 274(5285):246.

Application: Func, IF, WB-Ce, WB-Tr, Human, BT474, HeLa, MCF-7, MDA-MB-231, MDA-MB-453, MDA-MB-468, RH1, T-47D, cells

Pathway

- [Cell cycle](#)

Disease

- [Alcoholism](#)
- [Breast cancer](#)
- [Breast Neoplasms](#)
- [Carcinoma](#)
- [Genetic Predisposition to Disease](#)
- [Lung Neoplasms](#)