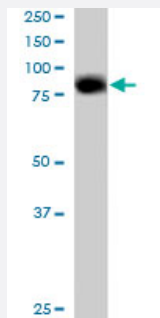


NDC80 polyclonal antibody

Catalog # PAB6236 Size 100 ug

Applications



Western Blot (Cell lysate)

NDC80 polyclonal antibody (Cat # PAB6236) staining (0.5 ug/mL) of HeLa lysate (RIPA buffer, 35 ug total protein per lane). Primary incubated for 1 hour. Detected by western blot using chemiluminescence.

Specification

Product Description Goat polyclonal antibody raised against synthetic peptide of NDC80.

Immunogen A synthetic peptide corresponding to human NDC80.

Sequence C-YEKKATLIKSSEE

Host Goat

Theoretical MW (kDa) 73.9

Reactivity Human

Form Liquid

Purification Antigen affinity purification

Concentration 0.5 mg/mL

Quality Control Testing Antibody Reactive Against Synthetic Peptide.

Recommend Usage
 ELISA (1:32000)
 Western Blot (0.5-2 ug/mL)
 The optimal working dilution should be determined by the end user.

Storage Buffer	In Tris saline, pH 7.3 (0.5% BSA, 0.02% sodium azide)
Storage Instruction	Store at -20°C. Aliquot to avoid repeated freezing and thawing.
Note	This product contains sodium azide: a POISONOUS AND HAZARDOUS SUBSTANCE which should be handled by trained staff only.

Applications

- Western Blot (Cell lysate)

NDC80 polyclonal antibody (Cat # PAB6236) staining (0.5 ug/mL) of HeLa lysate (RIPA buffer, 35 ug total protein per lane). Primary incubated for 1 hour. Detected by western blot using chemiluminescence.

- Enzyme-linked Immunoabsorbent Assay

Gene Info — NDC80

Entrez GeneID	10403
Protein Accession#	NP_006092
Gene Name	NDC80
Gene Alias	HEC, HEC1, KNTC2, TID3, hsNDC80
Gene Description	NDC80 homolog, kinetochore complex component (S. cerevisiae)
Omim ID	607272
Gene Ontology	Hyperlink
Gene Summary	HEC is one of several proteins involved in spindle checkpoint signaling. This surveillance mechanism assures correct segregation of chromosomes during cell division by detecting unaligned chromosomes and causing prometaphase arrest until the proper bipolar attachment of chromosomes is achieved.[supplied by OMIM]
Other Designations	highly expressed in cancer, rich in leucine heptad repeats kinetochore associated 2

Publication Reference

- [HEC, a novel nuclear protein rich in leucine heptad repeats specifically involved in mitosis.](#)

Chen Y, Riley DJ, Chen PL, Lee WH.

Molecular and Cellular Biology 1997 Jul; 17(10):6049.

Application: IF, IP, WB-Ce, Human, Mouse, 3T3-L1 cells, CV1 cells, Recombinant protein, Spleens, Testes, Thymus, T24, U-937 cells

Disease

- [Kidney Failure](#)