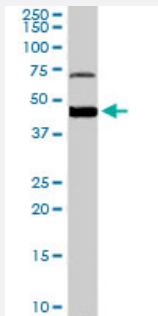


FOXG1 polyclonal antibody

Catalog # PAB6235 Size 100 ug

Applications



Western Blot (Tissue lysate)

FOXG1 polyclonal antibody (Cat # PAB6235) staining (0.3 ug/mL) of human brain lysate (35 ug protein in RIPA buffer). Primary incubation was 1 hour. Detected by chemiluminescence.

Specification

Product Description	Goat polyclonal antibody raised against synthetic peptide of FOXG1.
Immunogen	A synthetic peptide corresponding to human FOXG1.
Sequence	C-HQNQGSSSNPLIH
Host	Goat
Theoretical MW (kDa)	52.4
Reactivity	Human
Specificity	This antibody recognizes both human FOXG1A and FOXG1B, which are almost completely identical.
Form	Liquid
Purification	Antigen affinity purification
Concentration	0.5 mg/mL
Quality Control Testing	Antibody Reactive Against Synthetic Peptide.

Recommend Usage	ELISA (1:64000) Western blot (0.3-1.0 ug/mL) The optimal working dilution should be determined by the end user.
Storage Buffer	In Tris saline, pH 7.3 (0.5% BSA, 0.02% sodium azide)
Storage Instruction	Store at -20°C. Aliquot to avoid repeated freezing and thawing.
Note	This product contains sodium azide: a POISONOUS AND HAZARDOUS SUBSTANCE which should be handled by trained staff only.

Applications

- Western Blot (Tissue lysate)

FOXG1 polyclonal antibody (Cat # PAB6235) staining (0.3 ug/mL) of human brain lysate (35 ug protein in RIPA buffer). Primary incubation was 1 hour. Detected by chemiluminescence.

- Enzyme-linked Immunoabsorbent Assay

Gene Info — FOXG1

Entrez GeneID	2290
Protein Accession#	CAA550.38.1(FOXG1A);NP_005240.3(FOXG1B)
Gene Name	FOXG1
Gene Alias	BF1, BF2, FHLK3, FKH2, FKHL1, FKHL2, FKHL3, FKHL4, FOXG1A, FOXG1B, FOXG1C, HBF-1, HBF-2, HBF-3, HBF-G2, HBF2, HFK1, HFK2, HFK3, KHL2, QIN
Gene Description	forkhead box G1
Omim ID	164874
Gene Ontology	Hyperlink
Gene Summary	This gene belongs to the forkhead family of transcription factors which is characterized by a distinct forkhead domain. The specific function of this gene has not yet been determined; however, it may play a role in the development of the brain and telencephalon. [provided by RefSeq]
Other Designations	OTTHUMP00000178764 brain factor 2 forkhead box G1A forkhead box G1B forkhead box G1C forkhead, drosophila, homolog-like 2 forkhead-like 1 forkhead-like 2 forkhead-like 3 forkhead-like 4 oncogene QIN

Publication Reference

- [The genes for human brain factor 1 and 2, members of the fork head gene family, are clustered on chromosome 14q.](#)

Wiese S, Murphy DB, Schlung A, Burfeind P, Schmundt D, Schnulle V, Mattei MG, Thies U.

Biochimica et Biophysica Acta 1995 Jun; 1262(2-3):105.

Application: IHC, WB-Ti, Human, Human brains

Disease

- [Rett Syndrome](#)