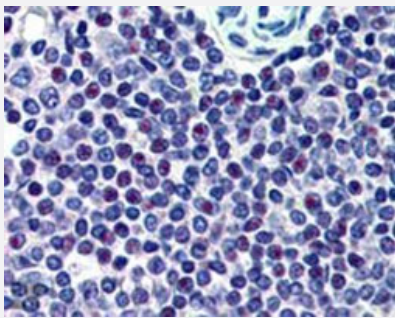


HMG20A polyclonal antibody

Catalog # PAB6233 Size 100 ug

Applications



Immunohistochemistry (Formalin/PFA-fixed paraffin-embedded sections)

HMG20A polyclonal antibody (Cat # PAB6233, 2.5 ug/mL) staining of paraffin embedded human spleen. Steamed antigen retrieval with citrate buffer pH 6, AP-staining.

Specification

Product Description	Goat polyclonal antibody raised against synthetic peptide of HMG20A.
Immunogen	A synthetic peptide corresponding to C-terminus of human HMG20A.
Sequence	C-ATVREVVNRLDR
Host	Goat
Theoretical MW (kDa)	40.1
Reactivity	Human, Rat
Form	Liquid
Purification	Antigen affinity purification
Concentration	0.5 mg/mL
Recommend Usage	ELISA (1:32000) Immunohistochemistry (Formalin/PFA-fixed paraffin-embedded sections) (1-2 ug/mL) The optimal working dilution should be determined by the end user.
Storage Buffer	In Tris saline, pH 7.3 (0.5% BSA, 0.02% sodium azide)

Storage Instruction

Store at -20°C.
Aliquot to avoid repeated freezing and thawing.

Note

This product contains sodium azide: a POISONOUS AND HAZARDOUS SUBSTANCE which should be handled by trained staff only.

Applications

- Western Blot
- Immunohistochemistry (Formalin/PFA-fixed paraffin-embedded sections)
HMG20A polyclonal antibody (Cat # PAB6233, 2.5 ug/mL) staining of paraffin embedded human spleen. Steamed antigen retrieval with citrate buffer pH 6, AP-staining.
- Enzyme-linked Immunoabsorbent Assay

Gene Info — HMG20A

Entrez GeneID	10363
Protein Accession#	NP_060670.1
Gene Name	HMG20A
Gene Alias	FLJ10739, HMGX1, HMGXB1
Gene Description	high-mobility group 20A
Omim ID	605534
Gene Ontology	Hyperlink
Other Designations	HMG box domain containing 1

Publication Reference

- [HMG20A and HMG20B map to human chromosomes 15q24 and 19p13.3 and constitute a distinct class of HMG-box genes with ubiquitous expression.](#)

Sumoy L, Carim L, Escarceller M, Nadal M, Gratacos M, Pujana MA, Estivill X, Peral B.
Cytogenetics and Cell Genetics 2000 Jan; 88(1-2):62.