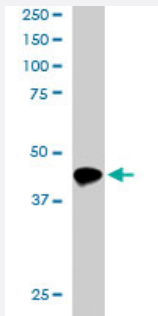


IRF8 polyclonal antibody

Catalog # PAB6228 Size 100 ug

Applications



Western Blot (Cell lysate)

IRF8 polyclonal antibody (Cat # PAB6228) staining (1 ug/mL) of K-562 lysate (RIPA buffer, 30 ug total protein per lane). Primary incubated for 1 hour. Detected by western blot using chemiluminescence.

Specification

Product Description Goat polyclonal antibody raised against synthetic peptide of IRF8.

Immunogen A synthetic peptide corresponding to human IRF8.

Sequence C-QRSFFRENQQITV

Host Goat

Theoretical MW (kDa) 48.4

Reactivity Human

Form Liquid

Purification Antigen affinity purification

Concentration 0.5 mg/mL

Quality Control Testing Antibody Reactive Against Synthetic Peptide.

Recommend Usage
 ELISA (1:8000)
 Western blot (0.5-2 ug/mL)
 The optimal working dilution should be determined by the end user.

Storage Buffer	In Tris saline, pH 7.3 (0.5% BSA, 0.02% sodium azide)
Storage Instruction	Store at -20°C. Aliquot to avoid repeated freezing and thawing.
Note	This product contains sodium azide: a POISONOUS AND HAZARDOUS SUBSTANCE which should be handled by trained staff only.

Applications

- Western Blot (Cell lysate)

IRF8 polyclonal antibody (Cat # PAB6228) staining (1 ug/mL) of K-562 lysate (RIPA buffer, 30 ug total protein per lane). Primary incubated for 1 hour. Detected by western blot using chemiluminescence.

- Enzyme-linked Immunoabsorbent Assay

Gene Info — IRF8

Entrez GeneID	3394
Protein Accession#	NP_002154
Gene Name	IRF8
Gene Alias	H-ICSBP, ICSBP, ICSBP1, IRF-8
Gene Description	interferon regulatory factor 8
Omim ID	601565
Gene Ontology	Hyperlink

Gene Summary	Interferon consensus sequence-binding protein (ICSBP) is a transcription factor of the interferon (IFN) regulatory factor (IRF) family. Proteins of this family are composed of a conserved DNA-binding domain in the N-terminal region and a divergent C-terminal region that serves as the regulatory domain. The IRF family proteins bind to the IFN-stimulated response element (ISRE) and regulate expression of genes stimulated by type I IFNs, namely IFN-alpha and IFN-beta. IRF family proteins also control expression of IFN-alpha and IFN-beta-regulated genes that are induced by viral infection. [provided by RefSeq]
---------------------	---

Other Designations	interferon consensus sequence binding protein 1
---------------------------	---

Publication Reference

- [Human interferon consensus sequence binding protein is a negative regulator of enhancer elements common to interferon-inducible genes.](#)

Weisz A, Marx P, Sharf R, Appella E, Driggers PH, Ozato K, Levi BZ.

The Journal of Biological Chemistry 1992 Dec; 267(35):25589.

Disease

- [Autoimmune Diseases](#)
- [Diabetes Mellitus](#)
- [Genetic Predisposition to Disease](#)
- [Hepatitis B](#)
- [Hepatitis C](#)
- [Multiple Sclerosis](#)
- [Viremia](#)