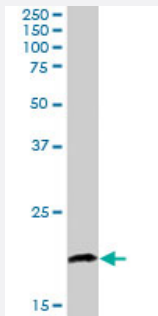


CABP1 polyclonal antibody

Catalog # PAB6223 Size 100 ug

Applications



Western Blot (Tissue lysate)

CABP1 polyclonal antibody (Cat # PAB6223) staining (1 ug/mL) of human brain lysate (RIPA buffer, 30 ug total protein per lane). Primary incubated for 1 hour. Detected by western blot using chemiluminescence.

Specification

Product Description Goat polyclonal antibody raised against synthetic peptide of CABP1.

Immunogen A synthetic peptide corresponding to human CABP1.

Sequence GNCVKYPLRNLS

Host Goat

Theoretical MW (kDa) 26, 19.4

Reactivity Human

Specificity This antibody is expected to recognize both human isoforms.

Form Liquid

Purification Antigen affinity purification

Concentration 0.5 mg/mL

Quality Control Testing Antibody Reactive Against Synthetic Peptide.

Recommend Usage	ELISA (1:32000) Western blot (0.5-2 ug/mL) The optimal working dilution should be determined by the end user.
Storage Buffer	In Tris saline, pH 7.3 (0.5% BSA, 0.02% sodium azide)
Storage Instruction	Store at -20°C. Aliquot to avoid repeated freezing and thawing.
Note	This product contains sodium azide: a POISONOUS AND HAZARDOUS SUBSTANCE which should be handled by trained staff only.

Applications

- Western Blot (Tissue lysate)

CABP1 polyclonal antibody (Cat # PAB6223) staining (1 ug/mL) of human brain lysate (RIPA buffer, 30 ug total protein per lane). Primary incubated for 1 hour. Detected by western blot using chemiluminescence.

- Enzyme-linked Immunoabsorbent Assay

Gene Info — CABP1

Entrez GeneID	9478
Protein Accession#	NP_004267;NP_112482
Gene Name	CABP1
Gene Alias	CALBRAIN, HCALB_BR
Gene Description	calcium binding protein 1
Omim ID	605563
Gene Ontology	Hyperlink
Gene Summary	The product of this gene belongs to a subfamily of calcium binding proteins, which share similarity to calmodulin. Calcium binding proteins are an important component of calcium mediated cellular signal transduction. Expression of this gene was only detected in retina and brain. Study of the mouse homolog demonstrated that groups of cells expressing this protein are located in the center or inner border of the inner nuclear layer of retina. Three alternatively spliced variants encoding different isoforms have been described. [provided by RefSeq]
Other Designations	calcium binding protein 5 caldendrin

Publication Reference

- [Calbrain, a novel two EF-hand calcium-binding protein that suppresses Ca²⁺/calmodulin-dependent protein kinase II activity in the brain.](#)

Yamaguchi K, Yamaguchi F, Miyamoto O, Sugimoto K, Konishi R, Hatase O, Tokuda M.

The Journal of Biological Chemistry 1999 Feb; 274(6):3610.