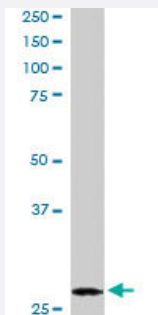


DCXR polyclonal antibody

Catalog # PAB6204

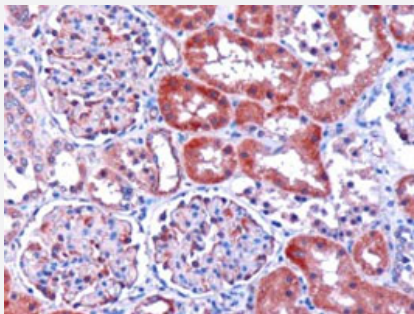
Size 100 ug

Applications



Western Blot (Tissue lysate)

DCXR polyclonal antibody (Cat # PAB6204) staining (0.1 ug/mL) of human kidney lysate (RIPA buffer, 35 ug total protein per lane). Primary incubated for 1 hour. Detected by western blot using chemiluminescence.



Immunohistochemistry (Formalin/PFA-fixed paraffin-embedded sections)

DCXR polyclonal antibody (Cat # PAB6204) staining (1 ug/mL) of paraffin embedded human kidney. Microwaved antigen retrieval with citrate buffer pH 6, HRP-staining.

Specification

Product Description	Goat polyclonal antibody raised against synthetic peptide of DCXR.
Immunogen	A synthetic peptide corresponding to human DCXR.
Sequence	GSTLPVEGGFWAC
Host	Goat
Theoretical MW (kDa)	25.9
Reactivity	Human
Form	Liquid

Purification	Antigen affinity purification
Concentration	0.5 mg/mL
Quality Control Testing	Antibody Reactive Against Synthetic Peptide.
Recommend Usage	ELISA (1:32000) Western Blot (0.1-0.3 ug/mL) Immunohistochemistry (1-2 ug/mL) The optimal working dilution should be determined by the end user.
Storage Buffer	In Tris saline, pH 7.3 (0.5% BSA, 0.02% sodium azide)
Storage Instruction	Store at -20°C. Aliquot to avoid repeated freezing and thawing.
Note	This product contains sodium azide: a POISONOUS AND HAZARDOUS SUBSTANCE which should be handled by trained staff only.

Applications

- Western Blot (Tissue lysate)

DCXR polyclonal antibody (Cat # PAB6204) staining (0.1 ug/mL) of human kidney lysate (RIPA buffer, 35 ug total protein per lane). Primary incubated for 1 hour. Detected by western blot using chemiluminescence.

- Immunohistochemistry (Formalin/PFA-fixed paraffin-embedded sections)

DCXR polyclonal antibody (Cat # PAB6204) staining (1 ug/mL) of paraffin embedded human kidney. Microwaved antigen retrieval with citrate buffer pH 6, HRP-staining.

- Enzyme-linked Immunoabsorbent Assay

Gene Info — DCXR

Entrez GeneID	51181
Protein Accession#	NP_057370.1
Gene Name	DCXR
Gene Alias	DCR, HCR2, HCR11, KIDCR, P34H, SDR20C1
Gene Description	dicarbonyl/L-xylulose reductase
Omim ID	608347

Gene Ontology

[Hyperlink](#)

Gene Summary

DCXR is an enzyme that has both diacetyl reductase (EC 1.1.1.5) and L-xylulose reductase (EC 1.1.1.10) activities (Nakagawa et al., 2002 [PubMed 11882650]).[supplied by OMIM]

Other Designations

carbonyl reductase ||human carbonyl reductase 2|kidney dicarbonyl reductase|short chain dehydrogenase/reductase family 20C, member 1

Publication Reference

- [Molecular characterization of mammalian dicarbonyl/L-xylulose reductase and its localization in kidney.](#)

Nakagawa J, Ishikura S, Asami J, Isaji T, Usami N, Hara A, Sakurai T, Tsuritani K, Oda K, Takahashi M, Yoshimoto M, Otsuka N, Kitamura K.

The Journal of Biological Chemistry 2002 May; 277(20):17883.

Application: IHC, WB-Ti, Mouse, Rat, Liver, Kidney

Pathway

- [Metabolic pathways](#)
- [Pentose and glucuronate interconversions](#)