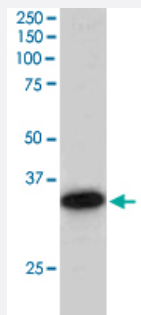


CBR1 polyclonal antibody

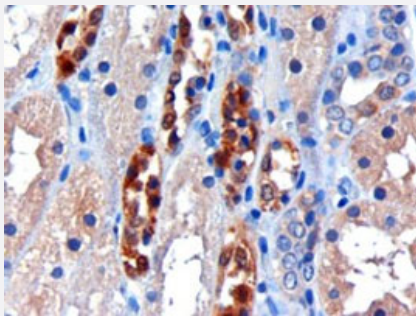
Catalog # PAB6202 Size 100 ug

Applications



Western Blot (Tissue lysate)

CBR1 polyclonal antibody (Cat # PAB6202) staining (0.2 ug/mL) of human liver lysate (RIPA buffer, 30 ug total protein per lane). Primary incubated for 1 hour. Detected by western blot using chemiluminescence.



Immunohistochemistry (Formalin/PFA-fixed paraffin-embedded sections)

CBR1 polyclonal antibody (Cat # PAB6202) staining (3 ug/mL) of paraffin embedded human kidney. Microwaved antigen retrieval with citrate buffer pH 6, HRP-staining.

Specification

Product Description	Goat polyclonal antibody raised against synthetic peptide of CBR1.
Immunogen	A synthetic peptide corresponding to C-terminus of human CBR1.
Sequence	C-HGQFVSEKRVEQW
Host	Goat
Theoretical MW (kDa)	30.4
Reactivity	Human
Form	Liquid

Purification	Antigen affinity purification
Concentration	0.5 mg/mL
Recommend Usage	ELISA (1:16000) Western Blot (0.2-0.5 ug/mL) Immunohistochemistry (1-2 ug/mL) The optimal working dilution should be determined by the end user.
Storage Buffer	In Tris saline, pH 7.3 (0.5% BSA, 0.02% sodium azide)
Storage Instruction	Store at -20°C. Aliquot to avoid repeated freezing and thawing.
Note	This product contains sodium azide: a POISONOUS AND HAZARDOUS SUBSTANCE which should be handled by trained staff only.

Applications

- Western Blot (Tissue lysate)

CBR1 polyclonal antibody (Cat # PAB6202) staining (0.2 ug/mL) of human liver lysate (RIPA buffer, 30 ug total protein per lane). Primary incubated for 1 hour. Detected by western blot using chemiluminescence.

- Immunohistochemistry (Formalin/PFA-fixed paraffin-embedded sections)

CBR1 polyclonal antibody (Cat # PAB6202) staining (3 ug/mL) of paraffin embedded human kidney. Microwaved antigen retrieval with citrate buffer pH 6, HRP-staining.

- Enzyme-linked Immunoabsorbent Assay

Gene Info — CBR1

Entrez GeneID	873
Protein Accession#	NP_001748.1
Gene Name	CBR1
Gene Alias	CBR, SDR21C1, hCBR1
Gene Description	carbonyl reductase 1
Omim ID	114830
Gene Ontology	Hyperlink

Gene Summary

Carbonyl reductase is one of several monomeric, NADPH-dependent oxidoreductases having wide specificity for carbonyl compounds. This enzyme is widely distributed in human tissues. Another carbonyl reductase gene, CRB3, lies close to this gene on chromosome 21q. [provided by RefSeq]

Other Designations

carbonyl reductase (NADPH) 1|prostaglandin 9-ketoreductase|prostaglandin-E(2) 9-reductase|short chain dehydrogenase/reductase family 21C, member 1

Publication Reference

- [Increased brain protein levels of carbonyl reductase and alcohol dehydrogenase in Down syndrome and Alzheimer's disease.](#)

Balcz B, Kirchner L, Cairns N, Fountoulakis M, Lubec G.

Journal of Neural Transmission. Supplementum 2001 Feb; 61:193.

Pathway

- [Arachidonic acid metabolism](#)
- [Metabolic pathways](#)

Disease

- [Breast cancer](#)
- [Breast Neoplasms](#)
- [Genetic Predisposition to Disease](#)
- [Lung Neoplasms](#)
- [Pulmonary Disease](#)
- [Urinary Bladder Neoplasms](#)
- [Werner syndrome](#)