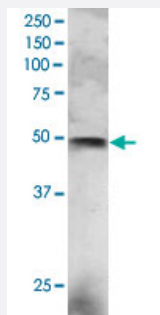


ELF3 polyclonal antibody

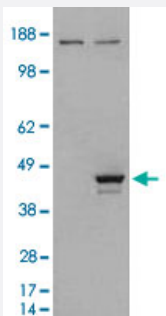
Catalog # PAB6195 Size 100 ug

Applications



Western Blot (Cell lysate)

ELF3 polyclonal antibody (Cat # PAB6195) staining (3 ug/mL) of NCI-H460 lysate (RIPA buffer, 30 ug total protein per lane). Primary incubated for 1 hour. Detected by western blot using chemiluminescence.



Western Blot (Transfected lysate)

HEK293 overexpressing ELF3 and probed with ELF3 polyclonal antibody (Cat # PAB6195) (mock transfection in first lane), tested by Origene.

Specification

Product Description	Goat polyclonal antibody raised against synthetic peptide of ELF3.
Immunogen	A synthetic peptide corresponding to human ELF3.
Sequence	C-SGWKEEEVLQSRN
Host	Goat
Theoretical MW (kDa)	41.5
Reactivity	Human
Form	Liquid

Purification	Antigen affinity purification
Concentration	0.5 mg/mL
Quality Control Testing	Antibody Reactive Against Synthetic Peptide.
Recommend Usage	ELISA (1:32000) Western blot (2-4 ug/mL) The optimal working dilution should be determined by the end user.
Storage Buffer	In Tris saline, pH 7.3 (0.5% BSA, 0.02% sodium azide)
Storage Instruction	Store at -20°C. Aliquot to avoid repeated freezing and thawing.
Note	This product contains sodium azide: a POISONOUS AND HAZARDOUS SUBSTANCE which should be handled by trained staff only.

Applications

- Western Blot (Cell lysate)

ELF3 polyclonal antibody (Cat # PAB6195) staining (3 ug/mL) of NCI-H460 lysate (RIPA buffer, 30 ug total protein per lane). Primary incubated for 1 hour. Detected by western blot using chemiluminescence.

- Western Blot (Transfected lysate)

HEK293 overexpressing ELF3 and probed with ELF3 polyclonal antibody (Cat # PAB6195) (mock transfection in first lane), tested by Origene.

- Enzyme-linked Immunoabsorbent Assay

Gene Info — ELF3

Entrez GeneID	1999
Protein Accession#	NP_004424.2
Gene Name	ELF3
Gene Alias	EPR-1, ERT, ESE-1, ESX
Gene Description	E74-like factor 3 (ets domain transcription factor, epithelial-specific)
Omim ID	602191
Gene Ontology	Hyperlink

Gene Summary

O

Other Designations

E74-like factor 3 (ETS domain transcription factor, serine box, epithelial-specific)|E74-like factor 3 (ets domain transcription factor)|OTTHUMP00000034050|OTTHUMP00000034051|epithelial-restricted with serine box|epithelium-restricted Ets protein ESX|ets

Publication Reference

- [Isolation and characterization of a novel epithelium-specific transcription factor, ESE-1, a member of the ets family.](#)

Oettgen P, Alani RM, Barcinski MA, Brown L, Akbarali Y, Boltax J, Kunsch C, Munger K, Libermann TA.

Molecular and Cellular Biology 1997 Aug; 17(8):4419.