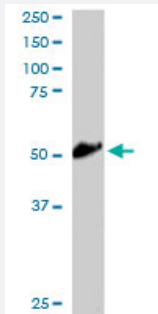


# KLF8 polyclonal antibody

Catalog # PAB6183      Size 100 ug

## Applications



### Western Blot (Tissue lysate)

KLF8 polyclonal antibody (Cat # PAB6183) staining (2 ug/mL) of human kidney lysate (RIPA buffer, 30 ug total protein per lane). Primary incubated for 1 hour. Detected by western blot using chemiluminescence.

## Specification

**Product Description** Goat polyclonal antibody raised against synthetic peptide of KLF8.

**Immunogen** A synthetic peptide corresponding to human KLF8.

**Sequence** VDMDKLINNLEVQ-C

**Host** Goat

**Theoretical MW (kDa)** 39.3, 27.2

**Reactivity** Human

**Form** Liquid

**Purification** Antigen affinity purification

**Concentration** 0.5 mg/mL

**Quality Control Testing** Antibody Reactive Against Synthetic Peptide.

**Recommend Usage**  
 ELISA (1:32000)  
 Western blot (1-3 ug/mL)  
 The optimal working dilution should be determined by the end user.

Storage Buffer	In Tris saline, pH 7.3 (0.5% BSA, 0.02% sodium azide)
Storage Instruction	Store at -20°C. Aliquot to avoid repeated freezing and thawing.
Note	This product contains sodium azide: a POISONOUS AND HAZARDOUS SUBSTANCE which should be handled by trained staff only.

## Applications

- Western Blot (Tissue lysate)

KLF8 polyclonal antibody (Cat # PAB6183) staining (2 ug/mL) of human kidney lysate (RIPA buffer, 30 ug total protein per lane). Primary incubated for 1 hour. Detected by western blot using chemiluminescence.

- Enzyme-linked Immunoabsorbent Assay

## Gene Info — KLF8

Entrez GeneID	<a href="#">11279</a>
Protein Accession#	<a href="#">NP_009181.2</a>
Gene Name	KLF8
Gene Alias	BKLF3, DKFZp686O08126, DXS741, MGC138314, ZNF741
Gene Description	Kruppel-like factor 8
Omim ID	<a href="#">300286</a>
Gene Ontology	<a href="#">Hyperlink</a>
Gene Summary	This gene encodes a protein which is a member of the Sp/KLF family of transcription factors. Members of this family contain a C-terminal DNA-binding domain with three Kruppel-like zinc fingers. The encoded protein is thought to play an important role in the regulation of epithelial to mesenchymal transition, a process which occurs normally during development but also during metastasis. A pseudogene has been identified on chromosome 16. Alternative splicing results in multiple transcript variants. [provided by RefSeq]
Other Designations	zinc finger protein 741

## Publication Reference

- [Human Kruppel-like factor 8: a CACCC-box binding protein that associates with CtBP and represses transcription.](#)

van Vliet J, Turner J, Crossley M.

Nucleic Acids Research 2000 May; 28(9):1955.

## Disease

- [Diabetes Mellitus](#)
- [Genetic Predisposition to Disease](#)